

# ACL Laboratories Respiratory Virus and Monkeypox Virus Activity Report

Updated: September 8, 2022

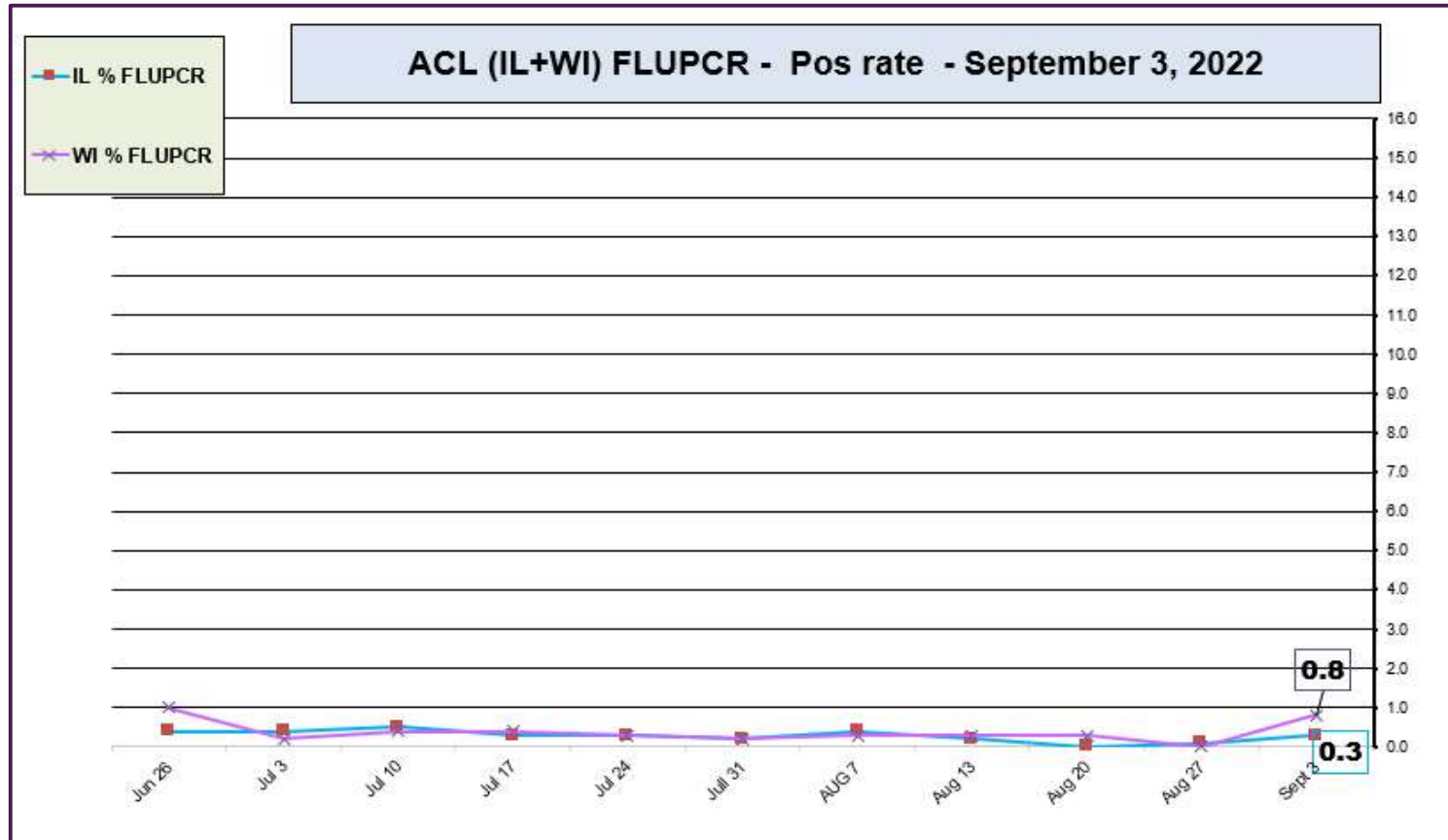


## RESPIRATORY PATHOGEN PANEL OCTOBER 2021- SEPTEMBER 7, 2022 Positivity Rate (%)

MONTH	FLU A UnSub	FLU A (H1N1)	2009 H1N1	FLU A H3N2	FLU B	RSV A/B	PARA 1	PARA 2	PARA 3	PARA 4	COR 229E	COR NL63	COR OC43	COR HKU1	META	ENTERO/RHINO	Adeno	BOCA	Legio-nella	Chla-mydia	Myco-plasma
SEP 2022	0.0	0.0	0.0	0.0	0.0	2.9	0.7	0.0	0.7	1.4	0.0	0.0	0.0	0.0	1.1	24.6	0.7	1.1	0.0	0.0	0.0
AUG 2022	0.0	0.0	0.0	0.1	0.0	1.6	0.7	0.0	0.8	1.1	0.2	0.0	0.0	0.0	0.5	15.2	2.0	2.1	0.2	0.0	0.0
JUL 2022	0.0	0.0	0.0	0.1	0.0	1.7	0.2	0.1	3.3	0.7	0.0	0.1	0.3	0.2	1.6	9.7	2.1	0.7	0.0	0.0	0.0
JUN 2022	0.0	0.0	0.0	0.4	0.0	1.8	0.5	0.2	9.5	1.0	0.0	0.2	0.5	0.1	3.6	12.6	1.7	0.5	0.2	0.0	0.0
MAY 2022	0.0	0.0	0.0	1.4	0.0	0.6	0.0	0.2	7.3	0.7	1.2	0.9	2.4	0.2	6.7	11.1	1.8	0.7	0.0	0.0	0.0
APR 2022	0.0	0.0	0.0	2.1	0.0	0.9	0.0	0.0	2.6	0.1	2.1	1.1	3.4	0.2	10.5	9.4	1.3	0.7	0.0	0.0	0.0
MAR 2022	0.0	0.0	0.0	1.6	0.0	0.8	0.0	0.1	1.1	0.2	1.3	0.6	4.4	0.1	6.9	11.7	2.6	1.2	0.0	0.0	0.0
FEB 2022	0.0	0.0	0.0	1.3	0.0	1.4	0.0	0.0	0.0	0.2	0.7	0.0	2.1	0.0	4.8	8.0	1.9	3.2	0.0	0.0	0.0
JAN 2022	0.0	0.0	0.0	1.3	0.0	1.6	0.0	0.5	0.6	0.5	0.6	0.0	1.2	0.0	3.9	4.6	1.3	1.8	6.2	0.0	0.0
DEC 2021	0.0	0.0	0.0	2.7	0.0	4.4	0.0	0.8	1.4	1.4	0.4	0.1	1.6	0.2	2.7	11.4	2.3	4.4	0.0	0.0	0.0
NOV 2021	0.0	0.1	0.1	0.7	0.0	7.6	0.1	1.5	0.9	1.5	0.2	0.1	0.9	0.0	1.0	18.3	1.4	3.7	0.1	0.0	0.0
OCT 2021	0.0	0.0	0.0	0.0	0.0	7.8	0.0	1.6	1.2	1.0	0.1	0.0	0.4	0.0	0.3	21.0	1.2	4.0	0.2	0.0	0.0

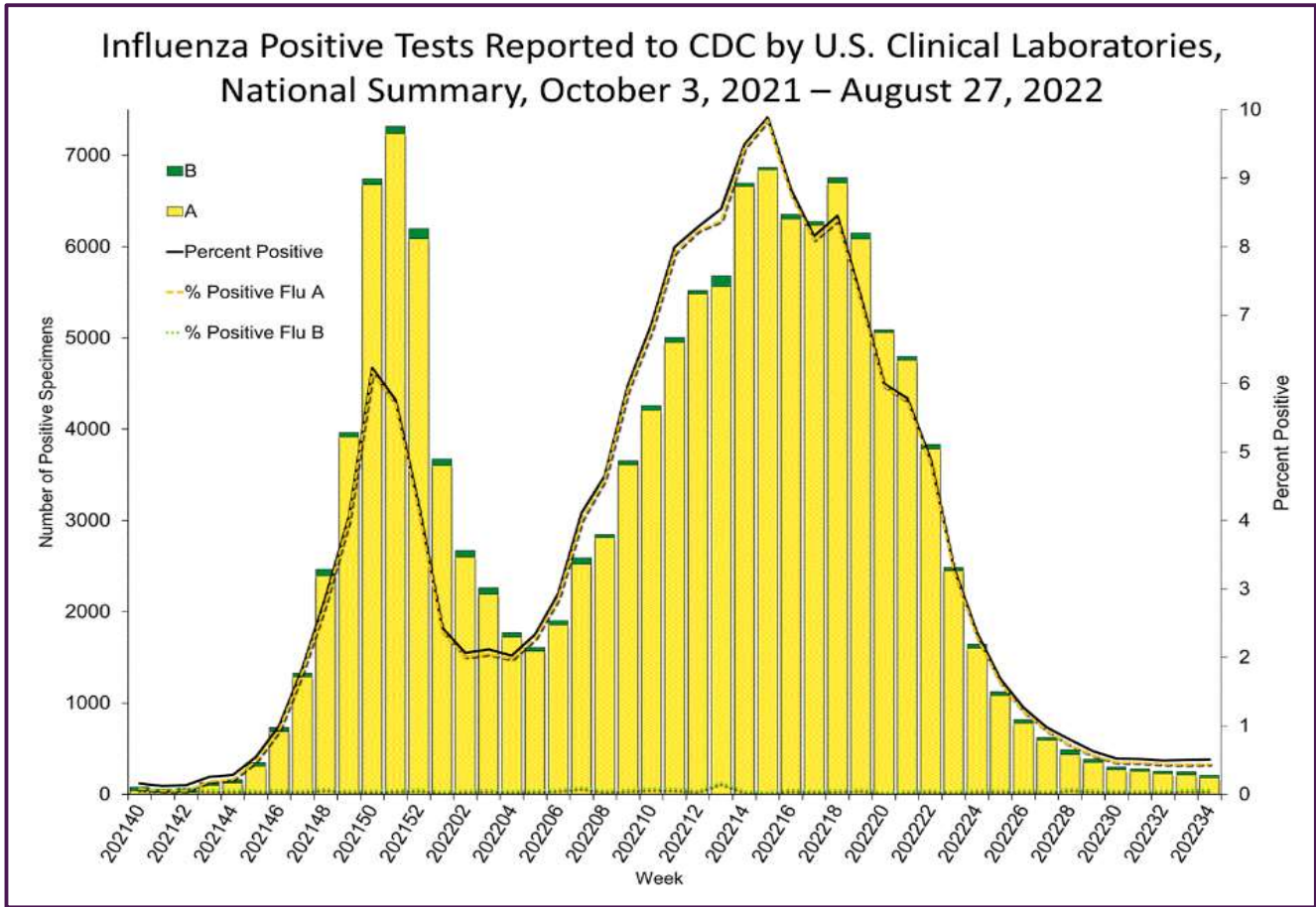
Data generated using: RPPNL (LAB9955)

## ACL INFLUENZA positivity rate (Jun 26, 2022 – September 3, 2022)

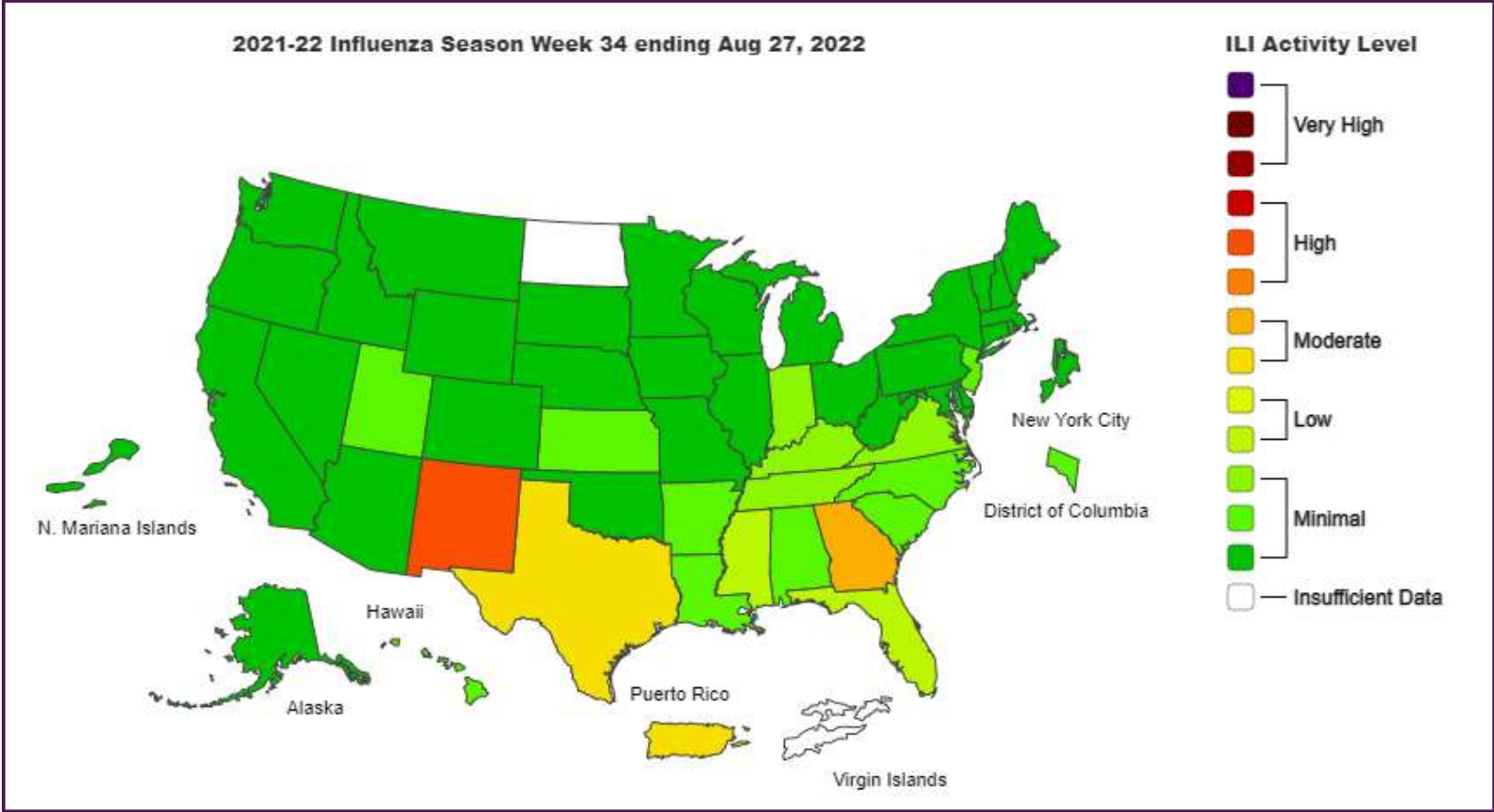


Data generated using: Respiratory Pathogen Panel (LAB9955), Influenza PCR, COVID/FLU/RSV Panel (LAB10789), COVID/Flu by PCR (LAB10889), and SARS-CoV-2/Influenza by PCR (LAB11071)

### Influenza Positive Tests Reported to CDC by U.S. Clinical Laboratories, National Summary, October 3, 2021 – August 27, 2022

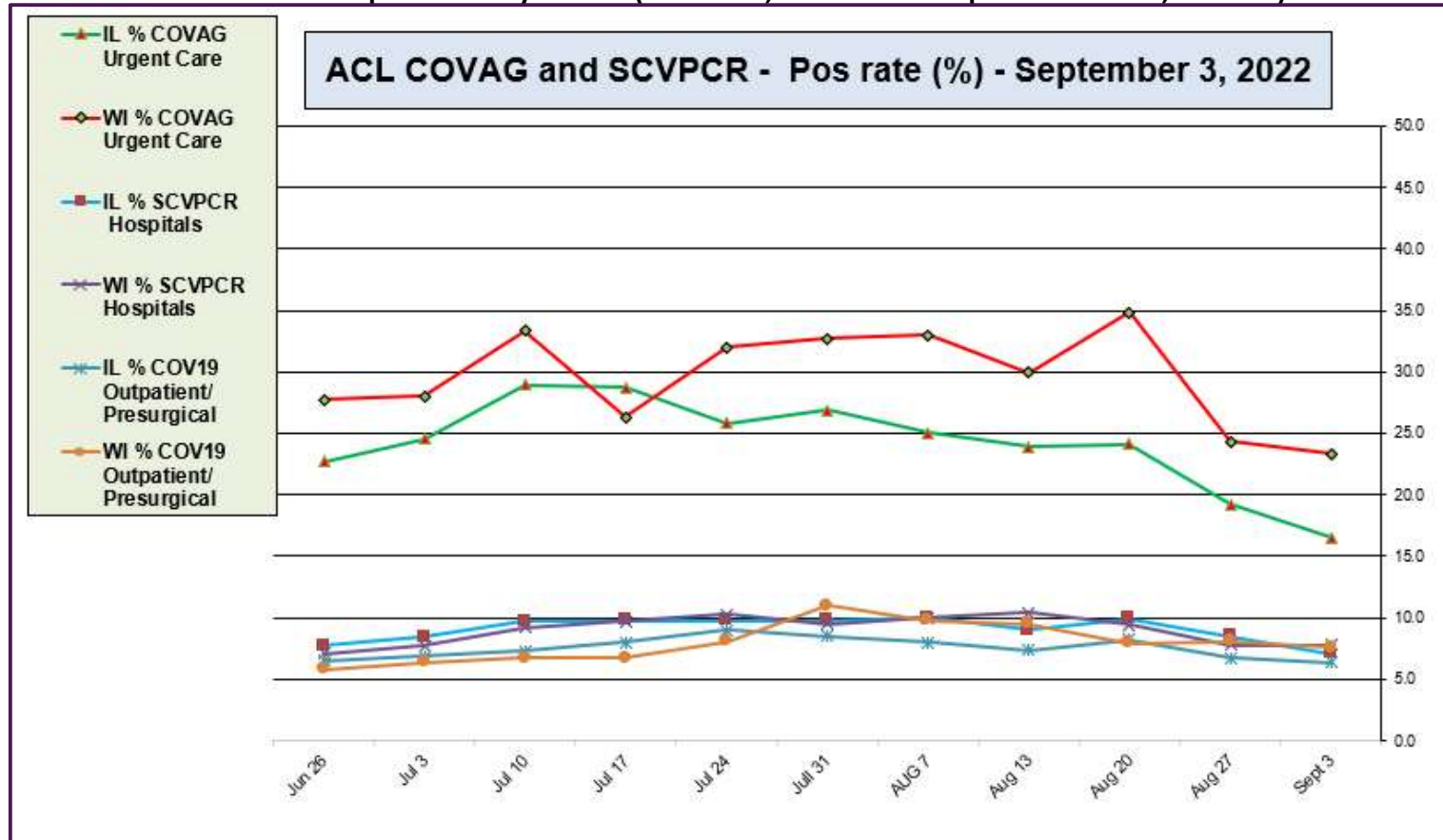


<https://www.cdc.gov/>



<https://www.cdc.gov/>

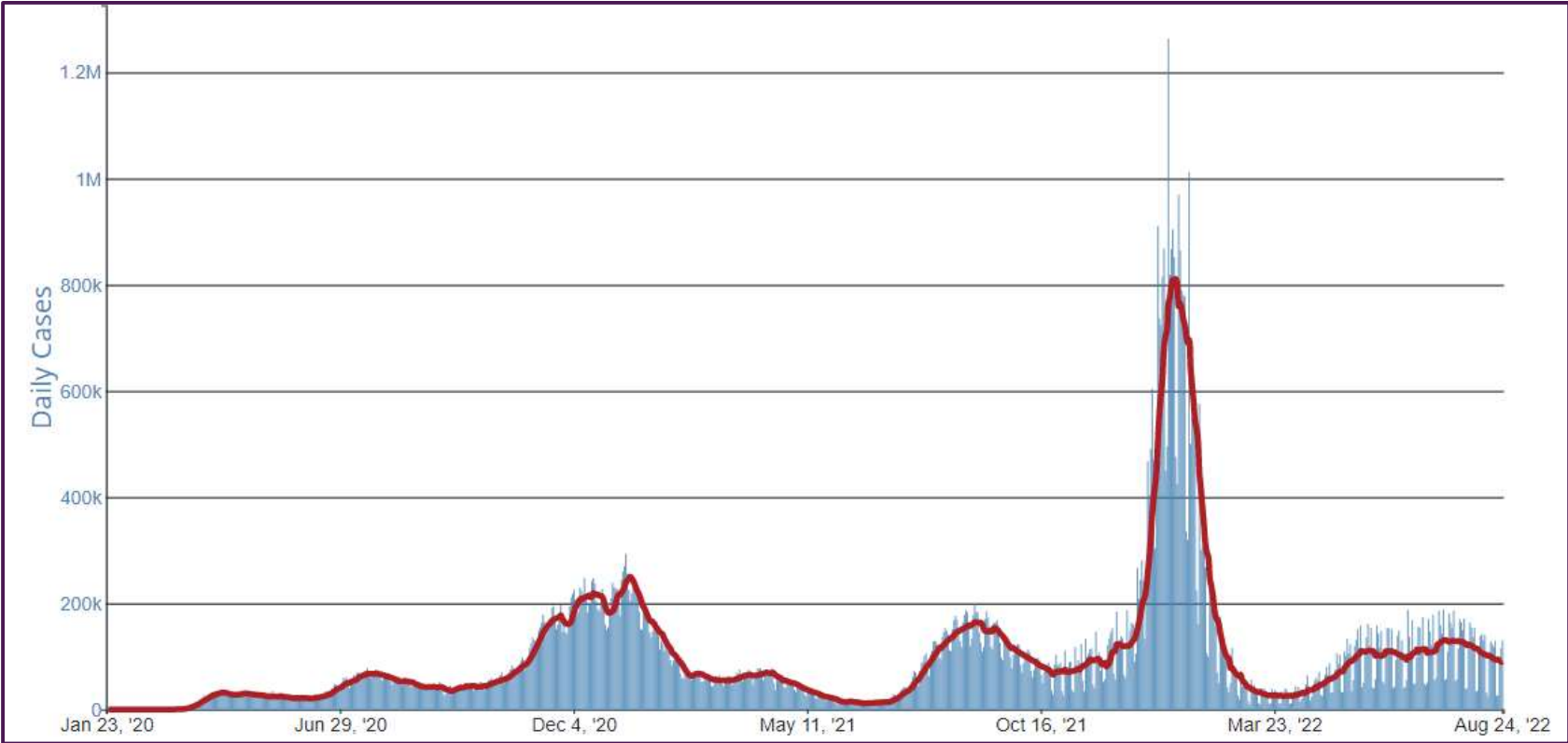
## ACL SARS-CoV-2 positivity rate (Jun 26, 2022 – September 3, 2022)



Data generated using: RAPID SARS-COV-2 BY PCR (LAB10644) COVID-19 ANTIGEN TEST (SOFIA) (LAB10715), COVID/FLU/RSV Panel (LAB10789)



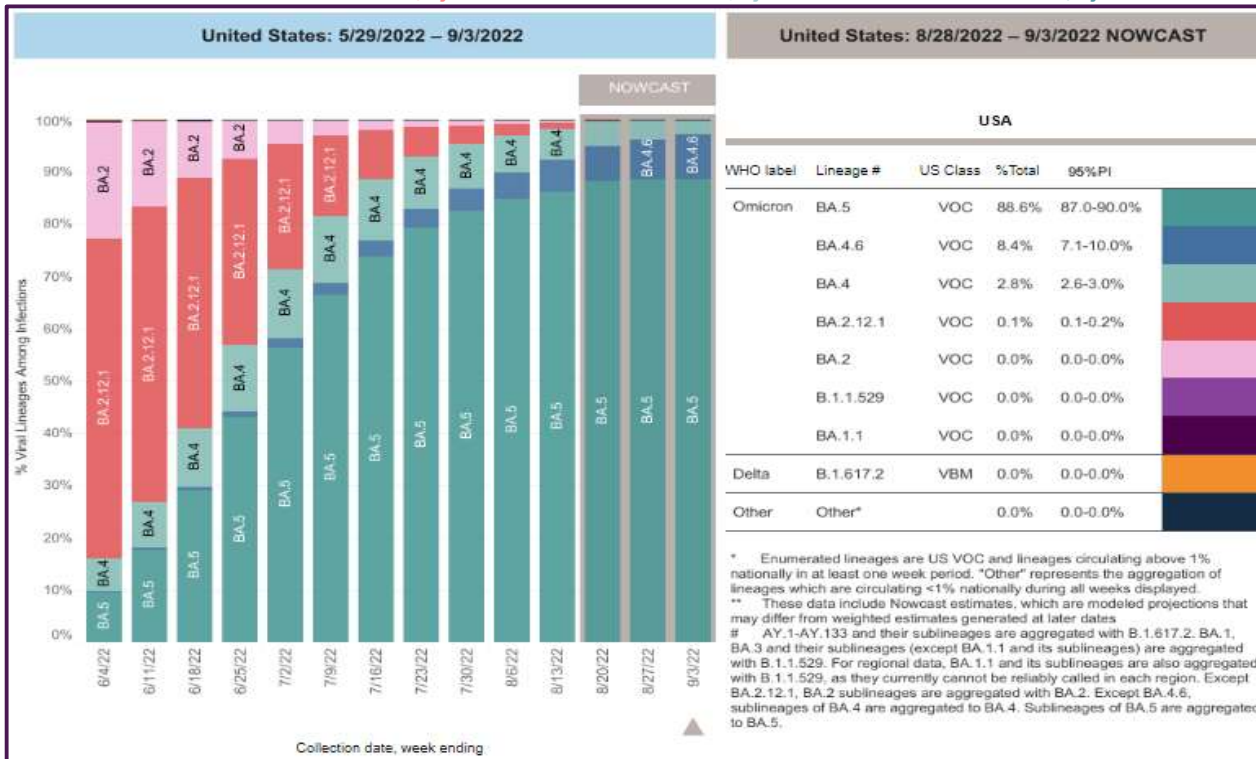
### CDC- Daily COVID-19 cases in US – Jan 23 – August 24, 2022



CDC SARS-CoV-2 positivity rate

<https://www.cdc.gov/>

September 3, 2022 – SARS-CoV-2 circulating in the Midwest based on projection by Nowcast modeling  
 (Omicron BA2.12.1 – 0.2% ↓, BA.4 – 2.8% ↓, BA.5 – 88.6% ↓, BA.4.6 – 8.4% ↑)

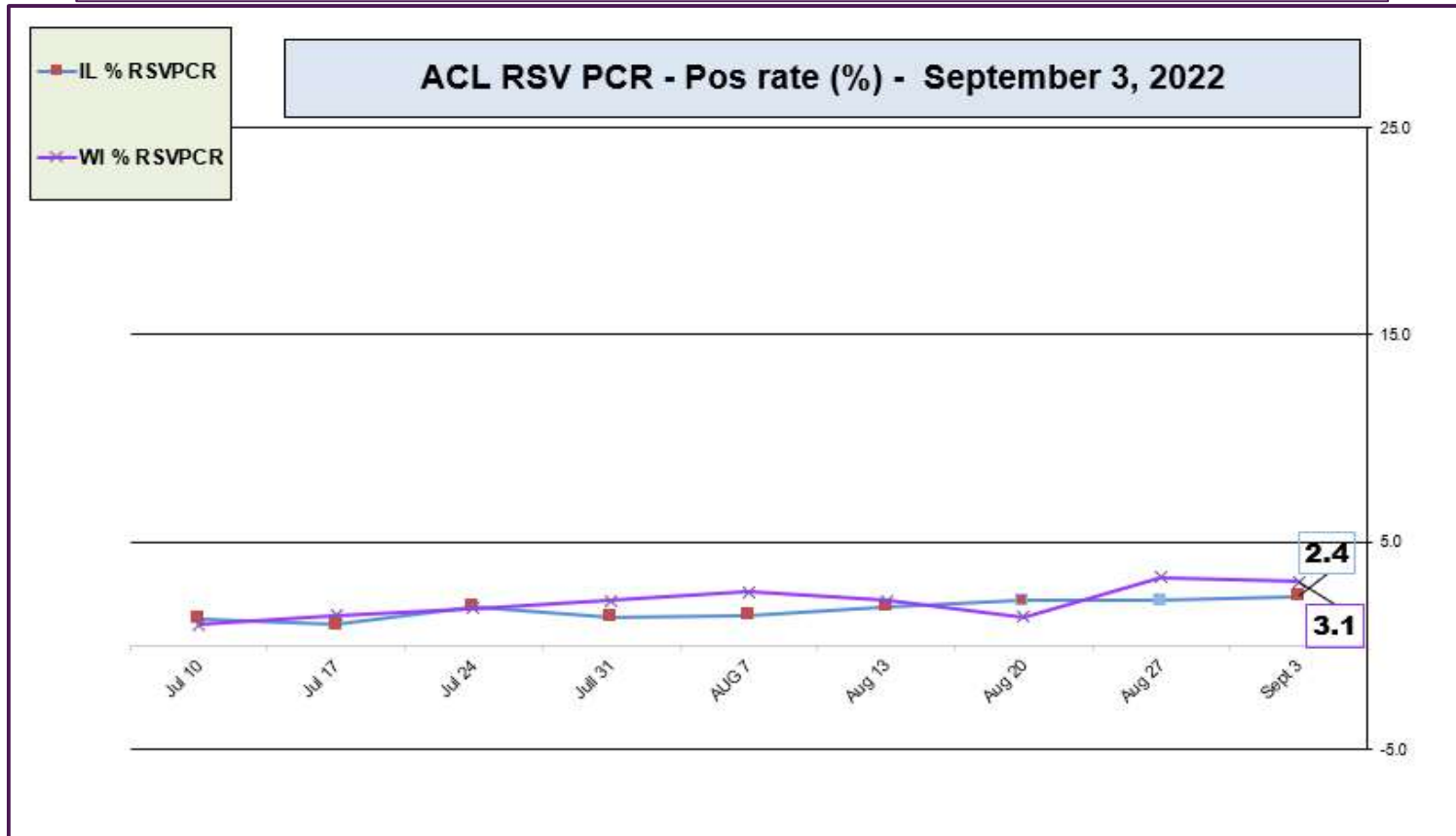


\*\* CDC uses Nowcast model that estimates more recent proportions of circulating variants (actual sequencing data is typically delayed for 2 weeks).

<https://www.cdc.gov/>

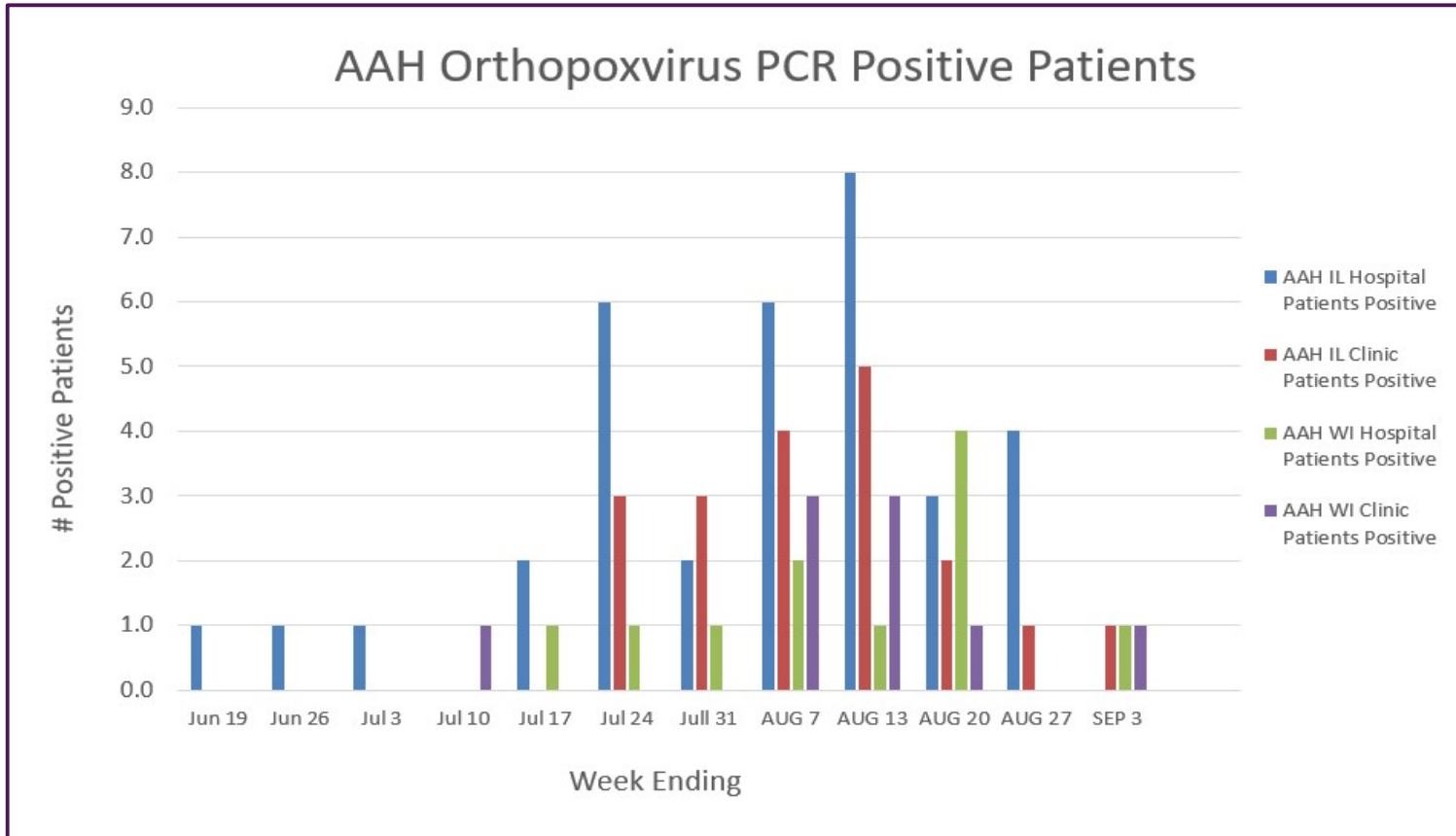


## ACL RSV PCR positivity rate (July 10, 2022 – September 3, 2022)



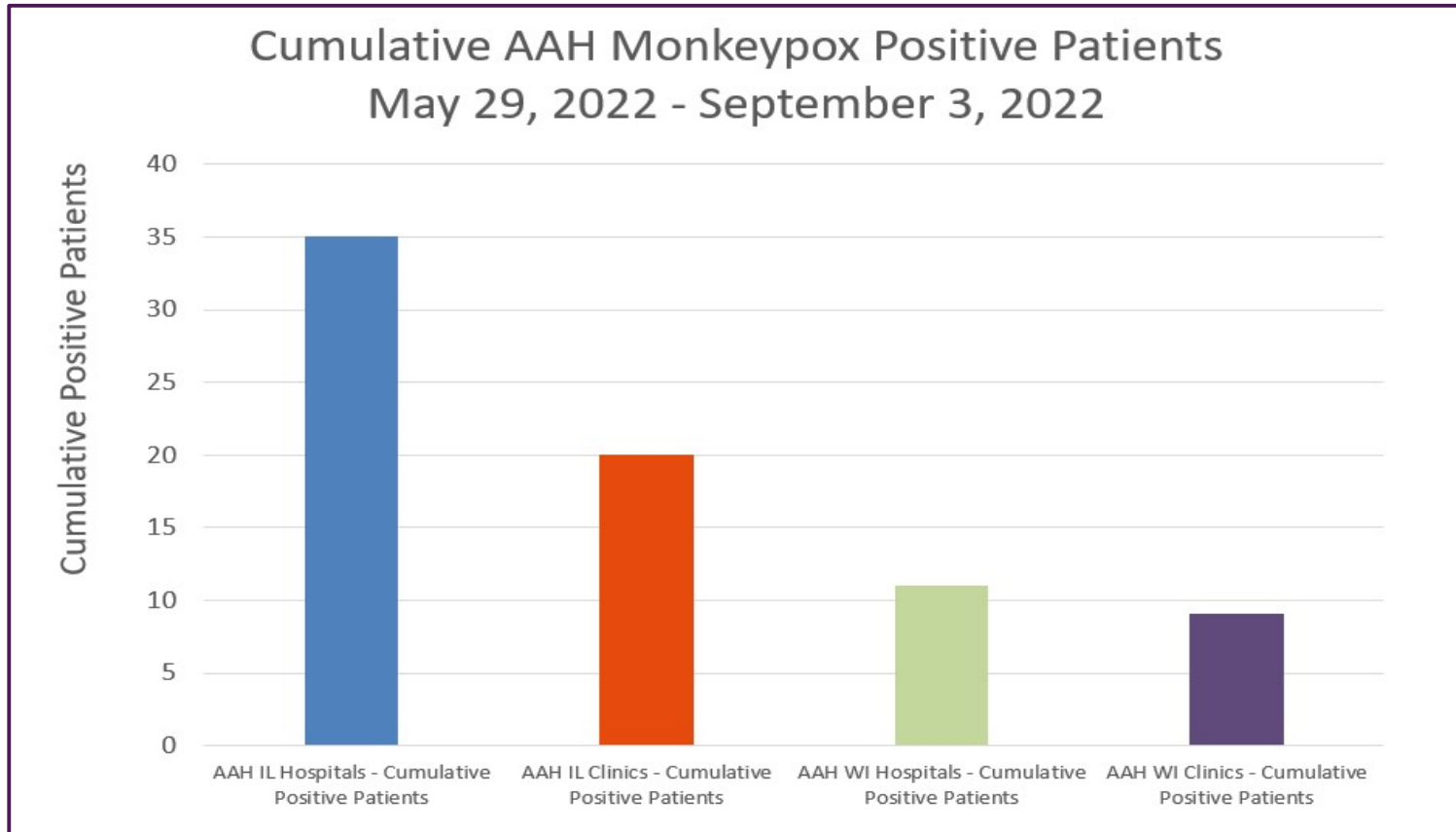
Data generated using: Respiratory Pathogen Panel (LAB9955) and COVID/FLU/RSV Panel (LAB10789)

## AAH Orthopoxvirus Positive Patients (June 19 – September 3, 2022)



Data generated using: Miscellaneous Test (LAB10119 to Sent to IL/WI State Labs) 5/29/22-7/24/22 and Orthopoxvirus by PCR (LAB11274 sent to ARUP 7/25/22 – Present)

## AAH Orthopoxvirus Positive Patients (May 29 – September 3, 2022)



Data generated using: Miscellaneous Test (LAB10119 to Sent to IL/WI State Labs) 5/29/22-7/24/22 and Orthopoxvirus by PCR (LAB11274 sent to ARUP 7/25/22 – Present)