

# ACL Laboratories Respiratory Virus and Monkeypox Virus Activity Report

Updated: September 15, 2022

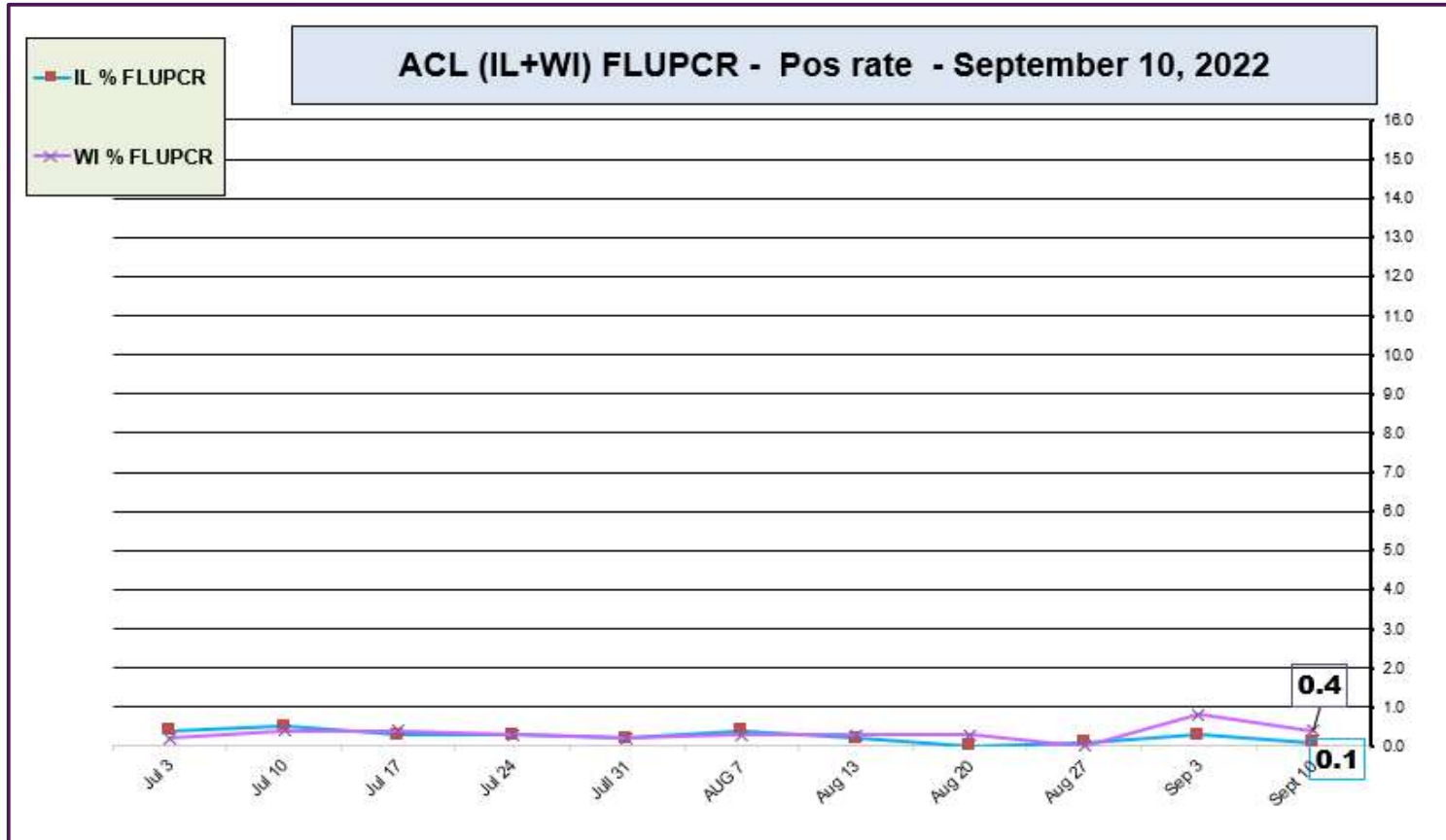


## RESPIRATORY PATHOGEN PANEL OCTOBER 2021- SEPTEMBER 15, 2022 Positivity Rate (%)

| MONTH    | FLU A UnSub | FLU A (H1N1) | 2009 H1N1 | FLU A H3N2 | FLU B | RSV A/B | PARA 1 | PARA 2 | PARA 3 | PARA 4 | COR 229E | COR NL63 | COR OC43 | COR HKU1 | META | ENTERO/RHINO | Adeno | BOCA | Legio-nella | Chla-mydia | Mycoplasm |
|----------|-------------|--------------|-----------|------------|-------|---------|--------|--------|--------|--------|----------|----------|----------|----------|------|--------------|-------|------|-------------|------------|-----------|
| SEP 2022 | 0.0         | 0.0          | 0.0       | 0.0        | 0.0   | 2.9     | 0.5    | 0.0    | 0.7    | 1.8    | 0.0      | 0.2      | 0.0      | 0.0      | 0.5  | 23.9         | 0.8   | 0.7  | 0.0         | 0.0        | 0.0       |
| AUG 2022 | 0.0         | 0.0          | 0.0       | 0.1        | 0.0   | 1.6     | 0.7    | 0.0    | 0.8    | 1.1    | 0.2      | 0.0      | 0.0      | 0.0      | 0.5  | 15.2         | 2.0   | 2.1  | 0.2         | 0.0        | 0.0       |
| JUL 2022 | 0.0         | 0.0          | 0.0       | 0.1        | 0.0   | 1.7     | 0.2    | 0.1    | 3.3    | 0.7    | 0.0      | 0.1      | 0.3      | 0.2      | 1.6  | 9.7          | 2.1   | 0.7  | 0.0         | 0.0        | 0.0       |
| JUN 2022 | 0.0         | 0.0          | 0.0       | 0.4        | 0.0   | 1.8     | 0.5    | 0.2    | 9.5    | 1.0    | 0.0      | 0.2      | 0.5      | 0.1      | 3.6  | 12.6         | 1.7   | 0.5  | 0.2         | 0.0        | 0.0       |
| MAY 2022 | 0.0         | 0.0          | 0.0       | 1.4        | 0.0   | 0.6     | 0.0    | 0.2    | 7.3    | 0.7    | 1.2      | 0.9      | 2.4      | 0.2      | 6.7  | 11.1         | 1.8   | 0.7  | 0.0         | 0.0        | 0.0       |
| APR 2022 | 0.0         | 0.0          | 0.0       | 2.1        | 0.0   | 0.9     | 0.0    | 0.0    | 2.6    | 0.1    | 2.1      | 1.1      | 3.4      | 0.2      | 10.5 | 9.4          | 1.3   | 0.7  | 0.0         | 0.0        | 0.0       |
| MAR 2022 | 0.0         | 0.0          | 0.0       | 1.6        | 0.0   | 0.8     | 0.0    | 0.1    | 1.1    | 0.2    | 1.3      | 0.6      | 4.4      | 0.1      | 6.9  | 11.7         | 2.6   | 1.2  | 0.0         | 0.0        | 0.0       |
| FEB 2022 | 0.0         | 0.0          | 0.0       | 1.3        | 0.0   | 1.4     | 0.0    | 0.0    | 0.0    | 0.2    | 0.7      | 0.0      | 2.1      | 0.0      | 4.8  | 8.0          | 1.9   | 3.2  | 0.0         | 0.0        | 0.0       |
| JAN 2022 | 0.0         | 0.0          | 0.0       | 1.3        | 0.0   | 1.6     | 0.0    | 0.5    | 0.6    | 0.5    | 0.6      | 0.0      | 1.2      | 0.0      | 3.9  | 4.6          | 1.3   | 1.8  | 6.2         | 0.0        | 0.0       |
| DEC 2021 | 0.0         | 0.0          | 0.0       | 2.7        | 0.0   | 4.4     | 0.0    | 0.8    | 1.4    | 1.4    | 0.4      | 0.1      | 1.6      | 0.2      | 2.7  | 11.4         | 2.3   | 4.4  | 0.0         | 0.0        | 0.0       |
| NOV 2021 | 0.0         | 0.1          | 0.1       | 0.7        | 0.0   | 7.6     | 0.1    | 1.5    | 0.9    | 1.5    | 0.2      | 0.1      | 0.9      | 0.0      | 1.0  | 18.3         | 1.4   | 3.7  | 0.1         | 0.0        | 0.0       |
| OCT 2021 | 0.0         | 0.0          | 0.0       | 0.0        | 0.0   | 7.8     | 0.0    | 1.6    | 1.2    | 1.0    | 0.1      | 0.0      | 0.4      | 0.0      | 0.3  | 21.0         | 1.2   | 4.0  | 0.2         | 0.0        | 0.0       |

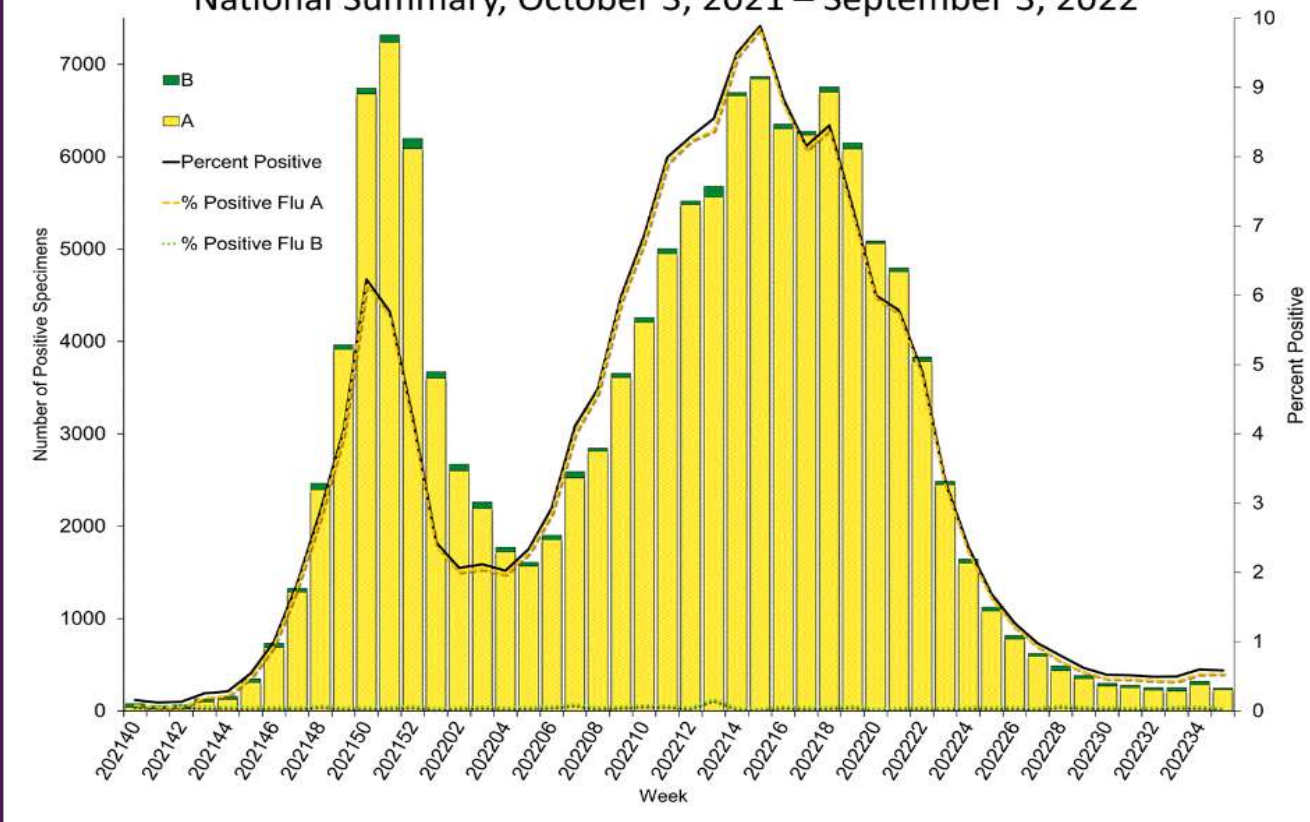
Data generated using: RPPNL (LAB9955)

## ACL INFLUENZA positivity rate (Jul 3, 2022 – September 10, 2022)

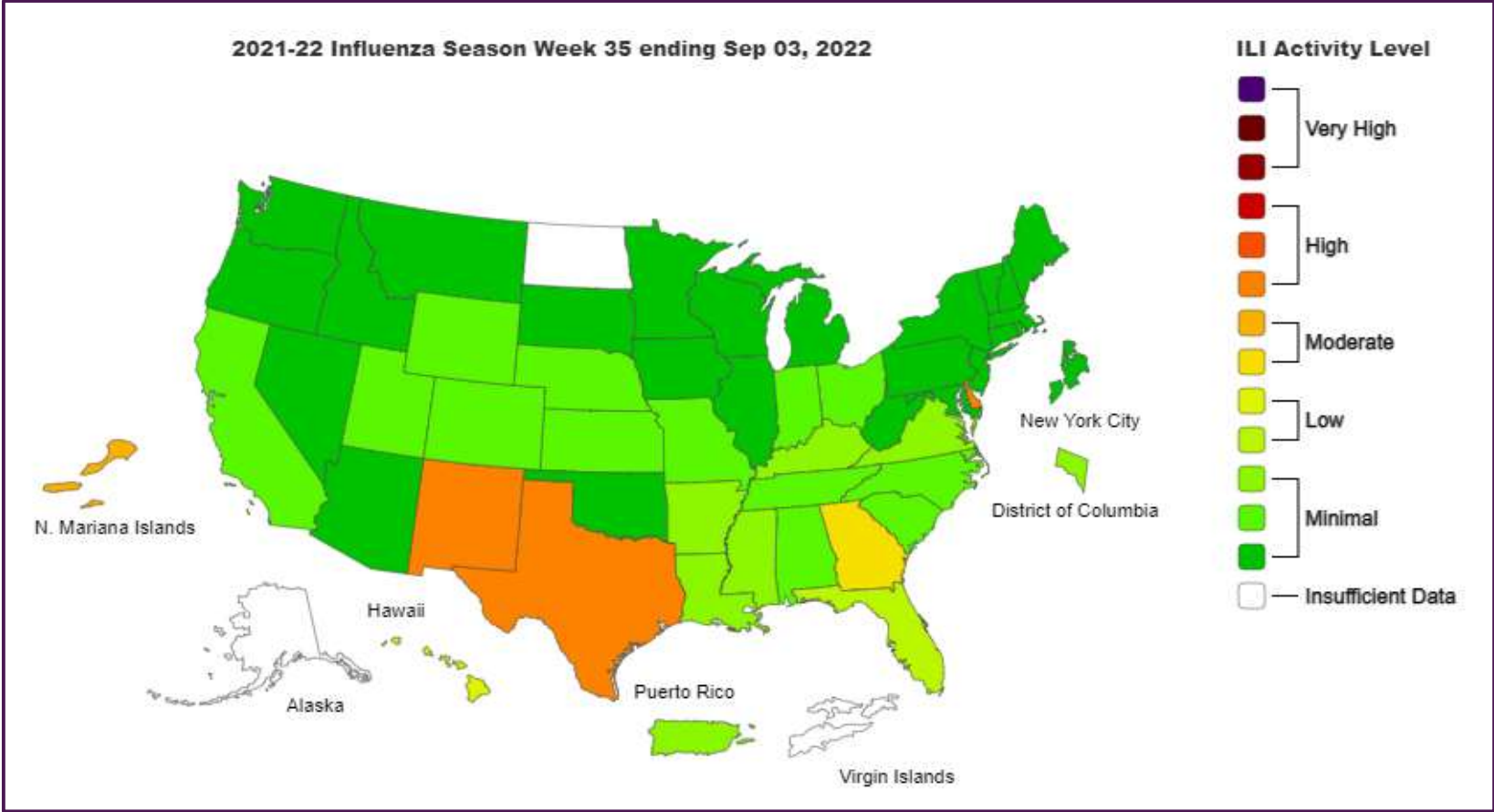


Data generated using: Respiratory Pathogen Panel (LAB9955), Influenza PCR, COVID/FLU/RSV Panel (LAB10789), COVID/Flu by PCR (LAB10889), and SARS-CoV-2/Influenza by PCR (LAB11071)

Influenza Positive Tests Reported to CDC by U.S. Clinical Laboratories,  
National Summary, October 3, 2021 – September 3, 2022

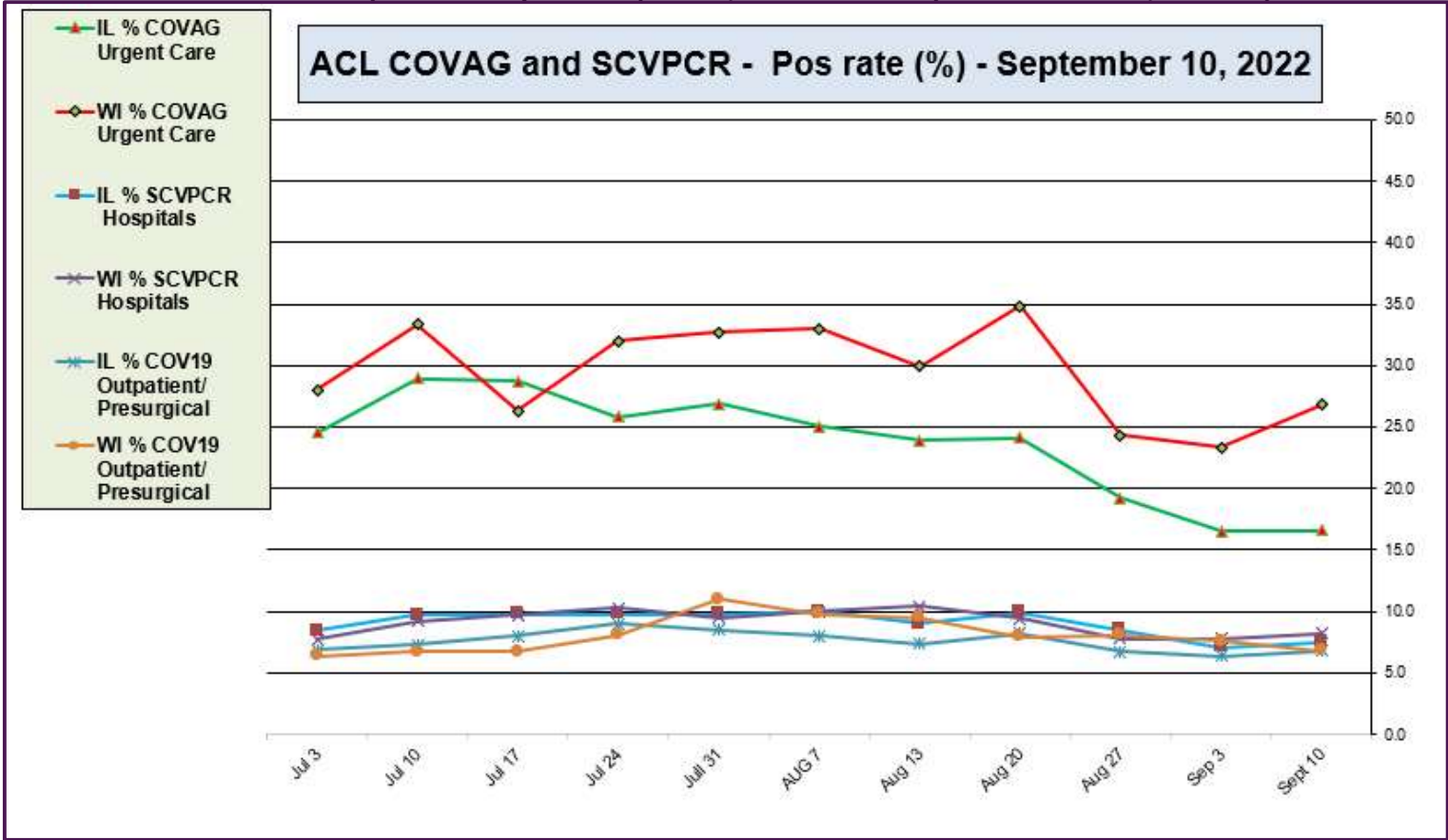


<https://www.cdc.gov/>



<https://www.cdc.gov/>

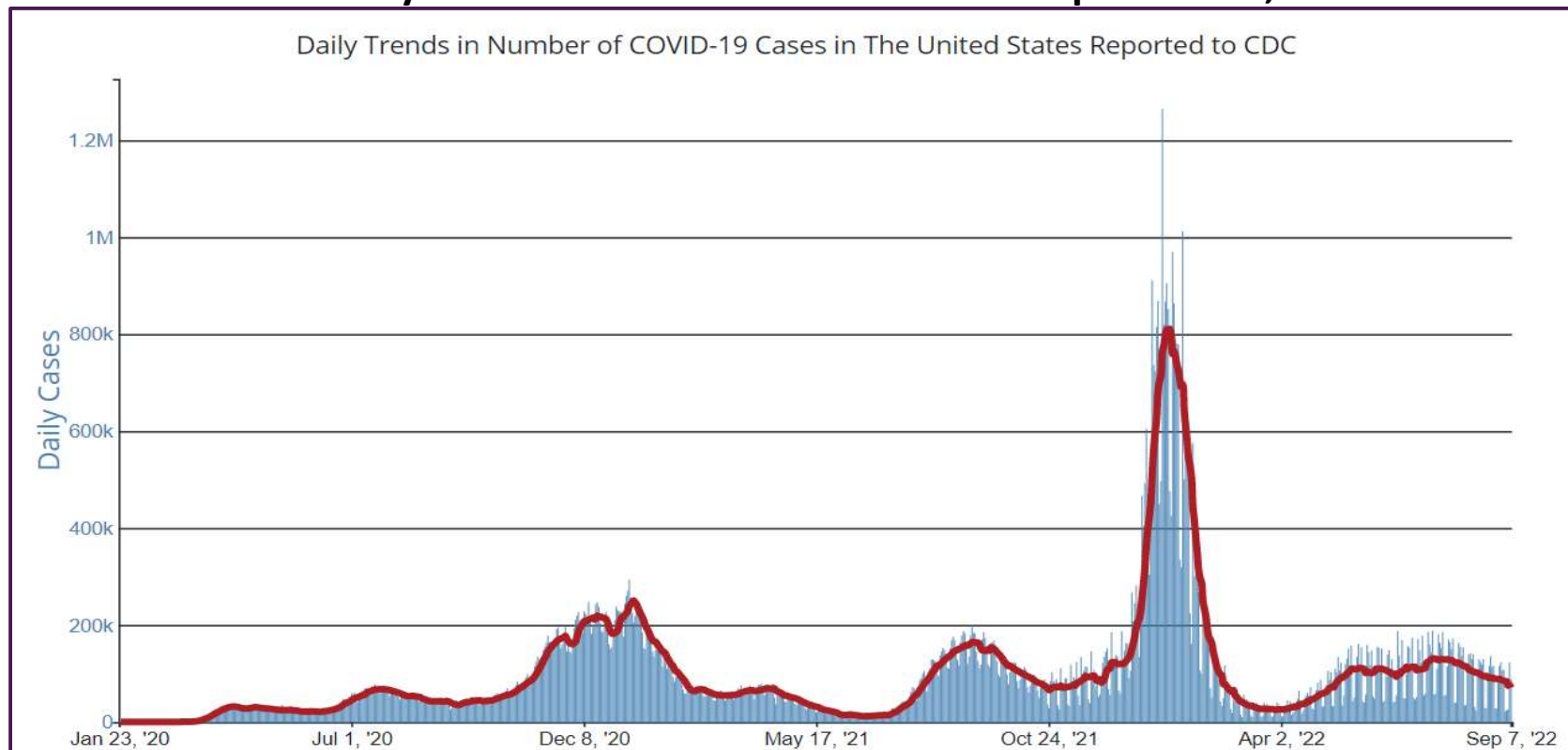
# ACL SARS-CoV-2 positivity rate (Jul 3, 2022 – September 10, 2022)



Data generated using: RAPID SARS-COV-2 BY PCR (LAB10644) COVID-19 ANTIGEN TEST (SOFIA) (LAB10715), COVID/FLU/RSV Panel (LAB10789)



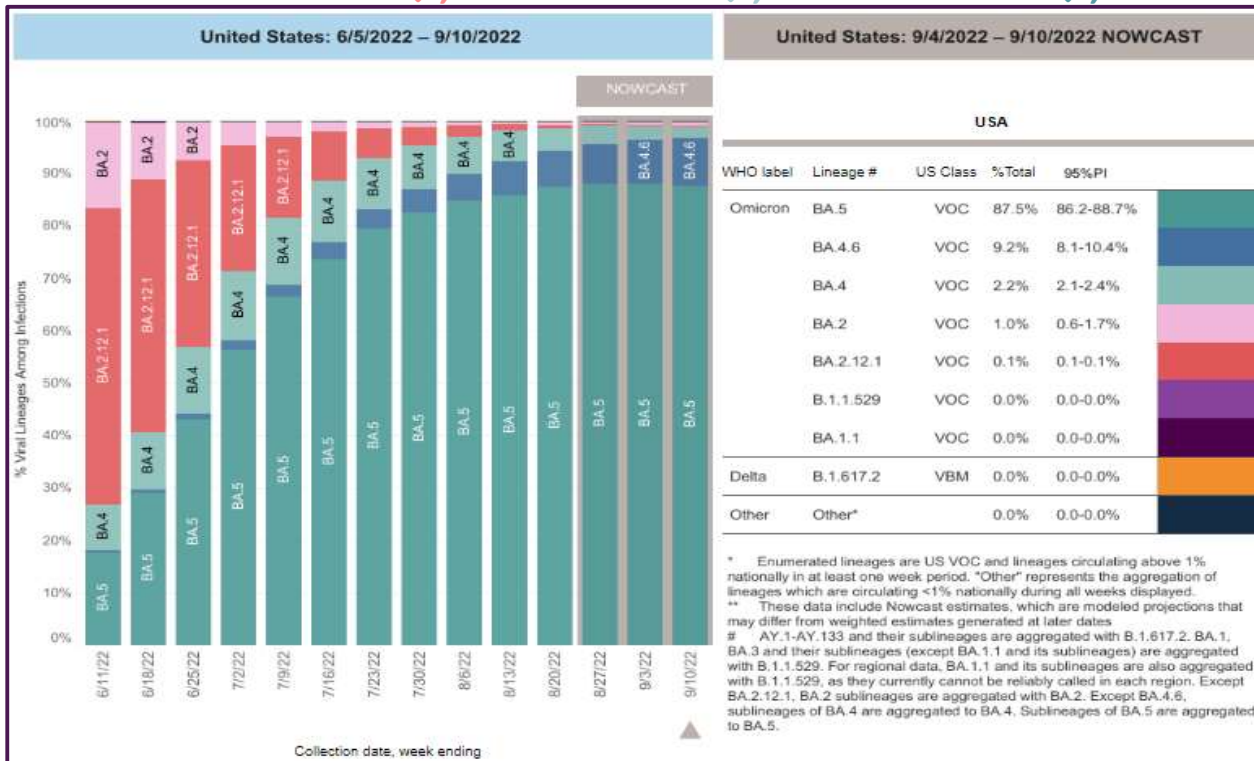
## CDC- Daily COVID-19 cases in US – Jan 23 – September 7, 2022



CDC SARS-CoV-2 positivity rate

<https://www.cdc.gov/>

**September 10, 2022 – SARS-CoV-2 circulating in the Midwest based on projection by Nowcast modeling**  
**(Omicron BA2.12.1 – 0.1% ↓, BA.4 – 2.2% ↓, BA.5 – 87.5% ↓, BA.4.6 – 9.2% ↑)**

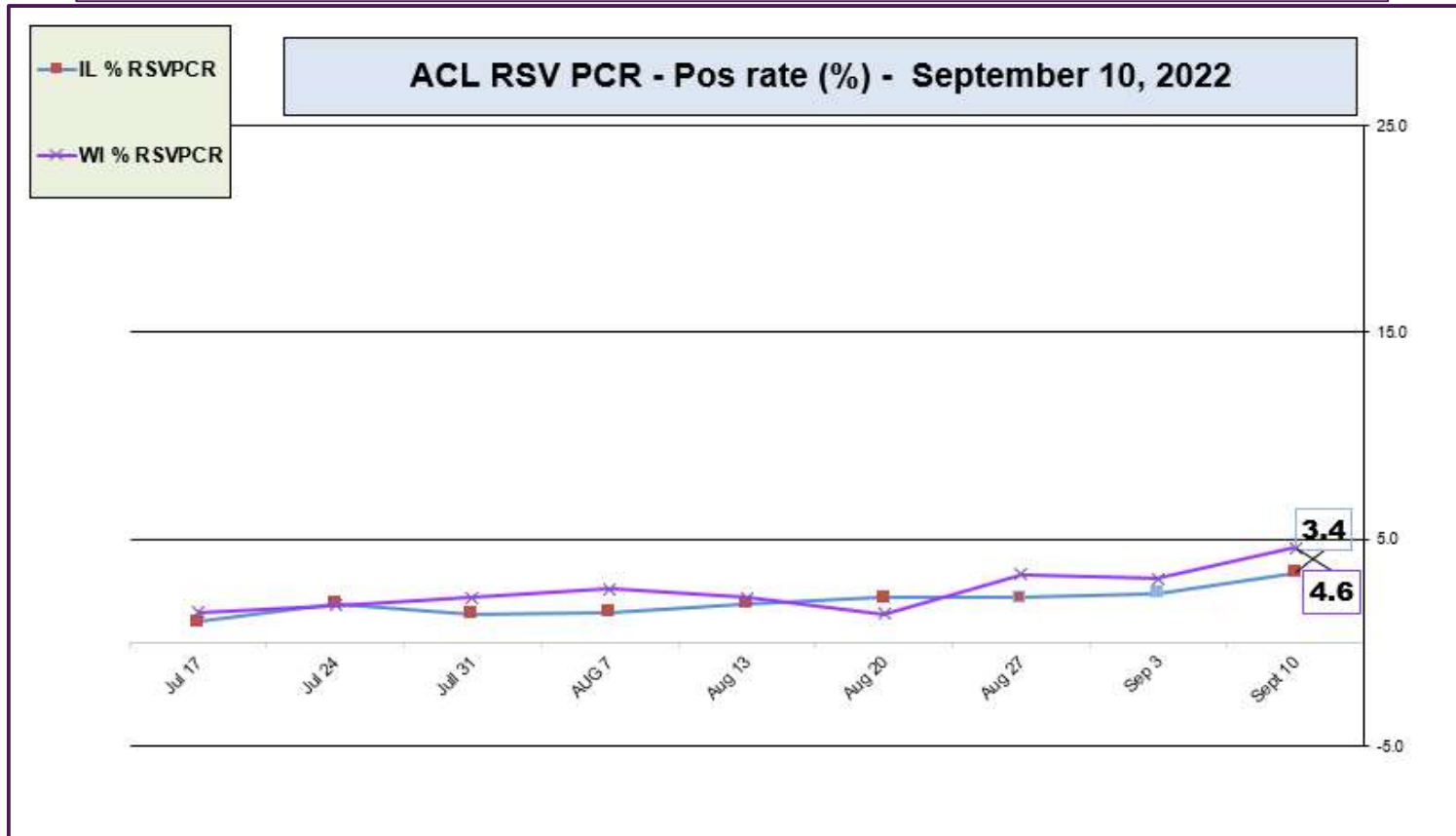


\*\* CDC uses Nowcast model that estimates more recent proportions of circulating variants (actual sequencing data is typically delayed for 2 weeks).

<https://www.cdc.gov/>

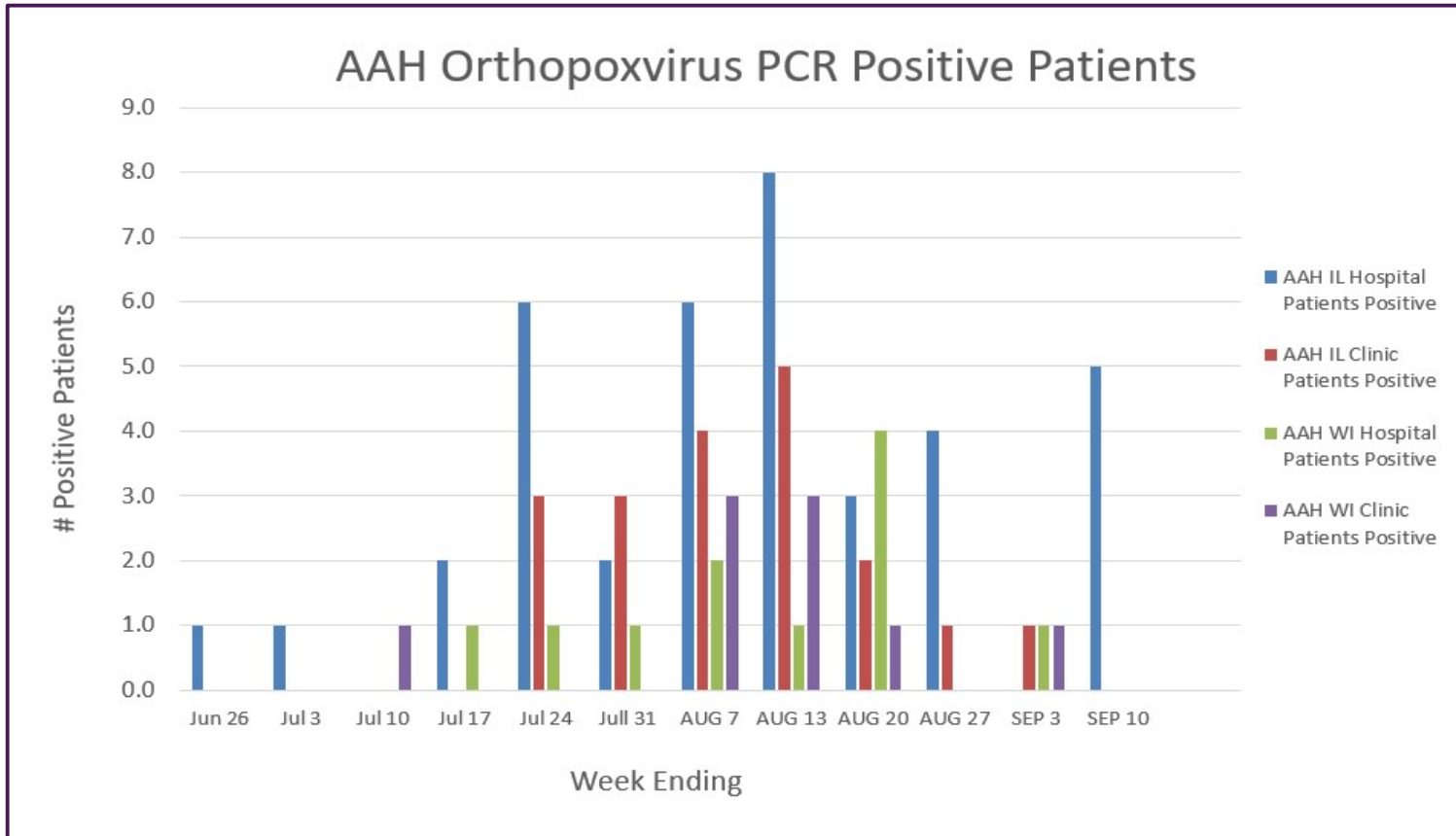


## ACL RSV PCR positivity rate (July 17, 2022 – September 10, 2022)



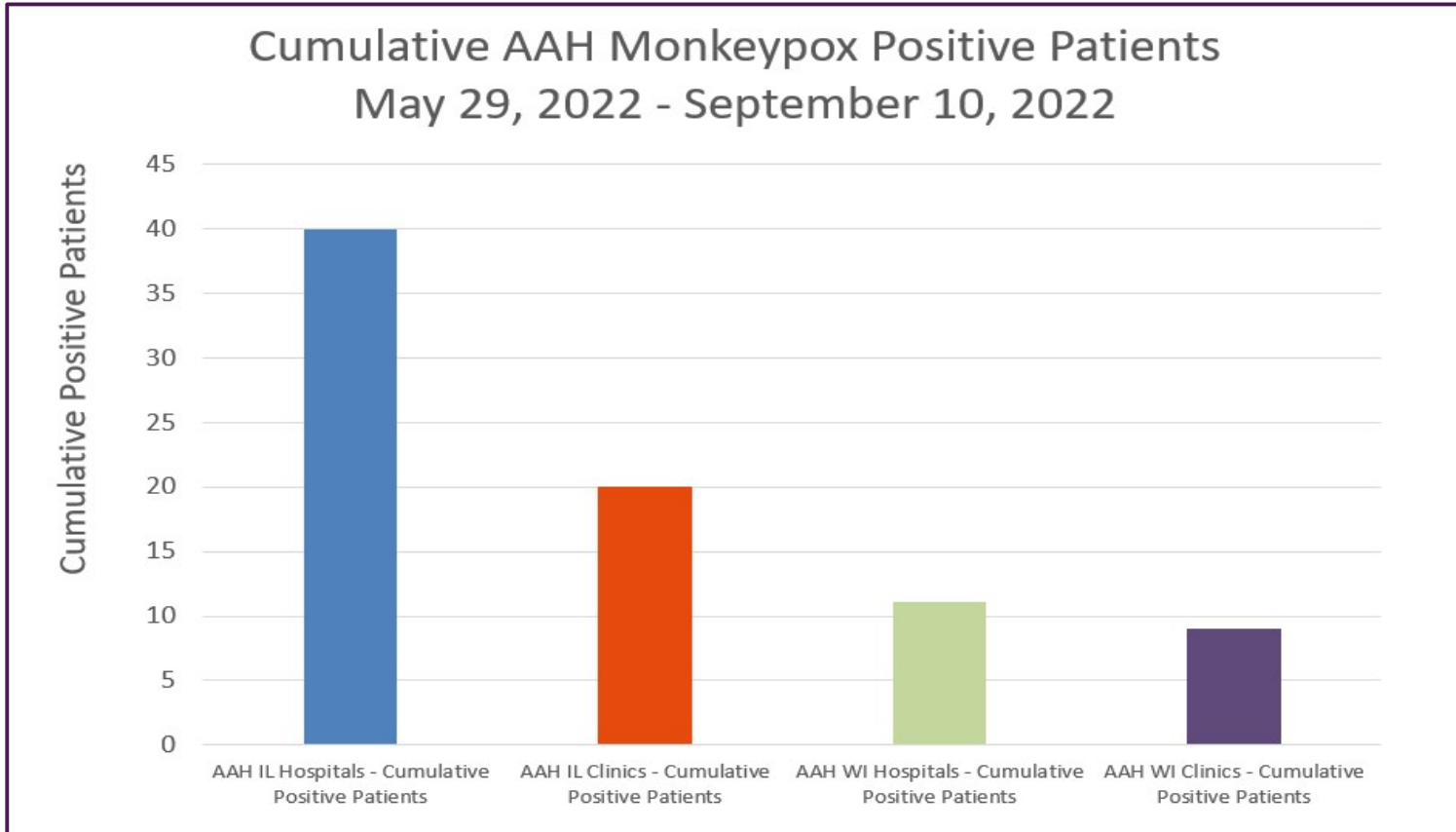
Data generated using: Respiratory Pathogen Panel (LAB9955) and COVID/FLU/RSV Panel (LAB10789)

## AAH Orthopoxvirus Positive Patients (June 19 – September 3, 2022)



Data generated using: Miscellaneous Test (LAB10119 to Sent to IL/WI State Labs) 5/29/22-7/24/22 and Orthopoxvirus by PCR (LAB11274 sent to ARUP 7/25/22 – Present)

## AAH Orthopoxvirus Positive Patients (May 29 – September 10, 2022)



Data generated using: Miscellaneous Test (LAB10119 to Sent to IL/WI State Labs) 5/29/22-7/24/22 and Orthopoxvirus by PCR (LAB11274 sent to ARUP 7/25/22 – Present)