

ACL Laboratories Respiratory Virus Activity Report

Updated: July 12, 2023

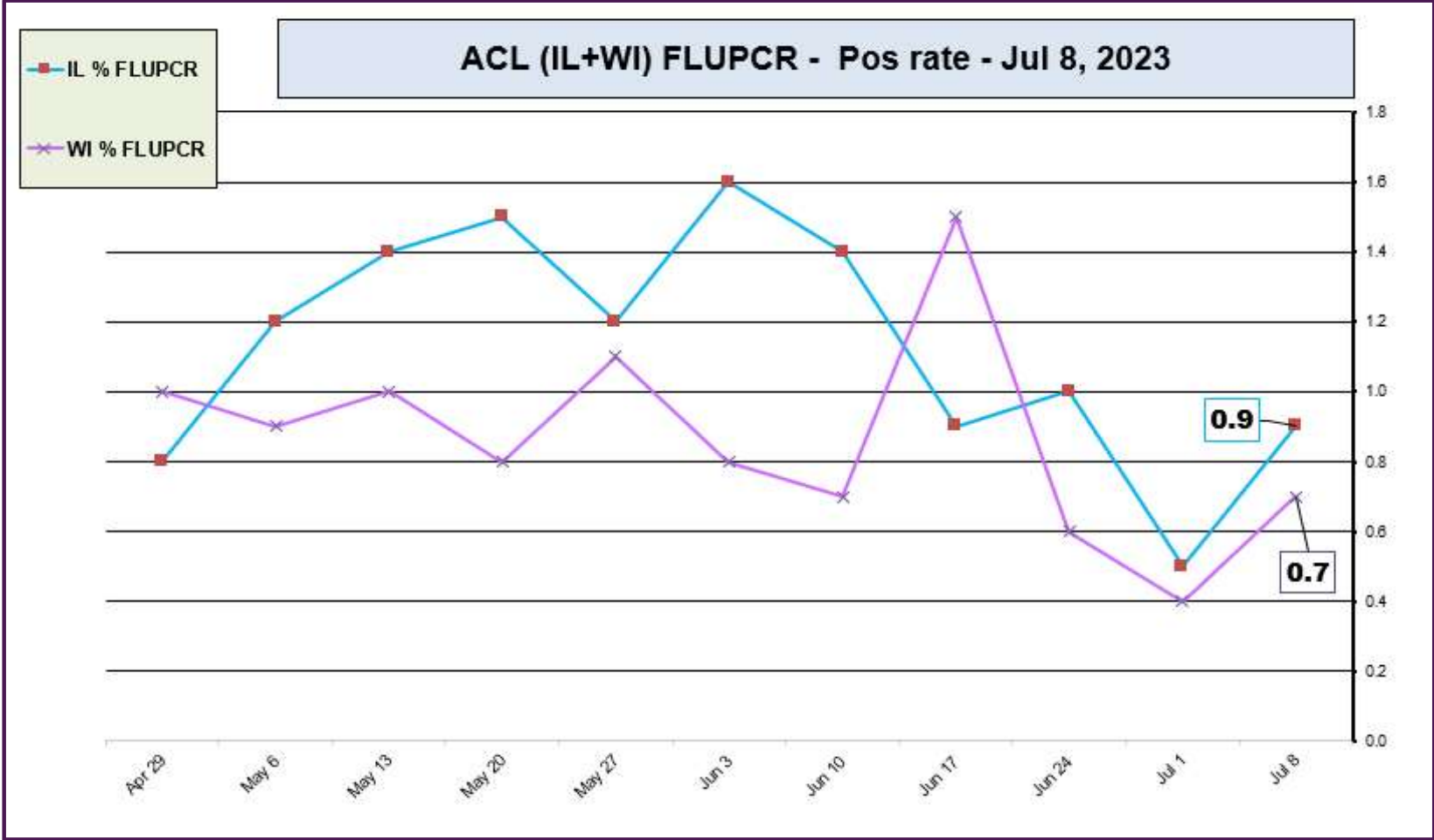


RESPIRATORY PATHOGEN PANEL AUGUST 2023 - JULY 12, 2023 Positivity Rate (%)

| MONTH | FLU A UnSub | FLU A (H1N1) | 2009 H1N1 | FLU A H3N2 | FLU B | RSV A/B | PARA 1 | PARA 2 | PARA 3 | PARA 4 | COR 229E | COR NL63 | COR OC43 | COR HKU1 | META | ENTERO/RHINO | Adeno | BOCA | Legio-nella | Chla-mydia | Mycoplasm |
|----------|-------------|--------------|-----------|------------|-------|---------|--------|--------|--------|--------|----------|----------|----------|----------|------|--------------|-------|------|-------------|------------|-----------|
| JUL 2023 | 0.0 | 0.0 | 0.0 | 0.0 | 0.0 | 0.6 | 1.2 | 2.4 | 2.4 | 1.2 | 0.0 | 0.0 | 0.0 | 0.0 | 6.8 | 9.7 | 2.6 | 0.3 | 0.6 | 0.0 | 0.0 |
| JUN 2023 | 0.0 | 0.0 | 0.1 | 0.0 | 0.1 | 0.3 | 0.8 | 1.6 | 5.2 | 0.0 | 0.1 | 0.1 | 0.1 | 0.0 | 0.5 | 11.3 | 3.5 | 0.3 | 0.2 | 0.0 | 0.0 |
| MAY 2023 | 0.0 | 0.1 | 0.2 | 0.0 | 0.1 | 0.2 | 0.5 | 1.1 | 6.8 | 0.1 | 0.1 | 0.9 | 0.1 | 0.1 | 3.2 | 17.1 | 3.2 | 0.5 | 0.0 | 0.0 | 0.0 |
| APR 2023 | 0.0 | 0.0 | 0.2 | 0.1 | 0.1 | 0.1 | 0.4 | 0.5 | 5.4 | 0.1 | 0.3 | 0.9 | 0.2 | 0.5 | 11.1 | 12.1 | 3.1 | 1.0 | 0.1 | 0.0 | 0.0 |
| MAR 2023 | 0.1 | 0.0 | 0.1 | 0.0 | 0.1 | 0.2 | 0.4 | 0.1 | 2.7 | 0.0 | 0.3 | 1.9 | 0.8 | 0.8 | 13.3 | 13.1 | 3.2 | 1.4 | 0.0 | 0.0 | 0.0 |
| FEB 2023 | 0.0 | 0.0 | 0.2 | 0.1 | 0.0 | 0.5 | 0.0 | 0.4 | 1.2 | 0.2 | 0.0 | 3.7 | 1.5 | 1.6 | 9.3 | 13.2 | 3.7 | 1.6 | 0.0 | 0.0 | 0.0 |
| JAN 2023 | 0.2 | 0.0 | 0.5 | 0.5 | 0.1 | 1.2 | 0.7 | 0.1 | 0.8 | 0.3 | 0.2 | 1.2 | 2.0 | 1.4 | 5.9 | 12.1 | 3.3 | 2.9 | 0.0 | 0.0 | 0.0 |
| DEC 2022 | 0.3 | 0.1 | 1.0 | 7.0 | 0.1 | 3.6 | 1.1 | 0.2 | 0.5 | 1.5 | 0.3 | 0.6 | 1.7 | 1.3 | 2.1 | 11.7 | 2.9 | 4.0 | 0.1 | 0.1 | 0.1 |
| NOV 2022 | 0.3 | 0.0 | 0.5 | 5.6 | 0.0 | 8.1 | 1.6 | 0.5 | 0.8 | 1.4 | 0.1 | 0.1 | 0.5 | 0.0 | 0.8 | 13.0 | 2.6 | 3.3 | 0.0 | 0.0 | 0.0 |
| OCT 2022 | 0.1 | 0.0 | 0.2 | 0.8 | 0.0 | 10.0 | 2.1 | 0.4 | 0.5 | 3.5 | 0.0 | 0.1 | 0.1 | 0.1 | 0.7 | 18.2 | 2.4 | 2.6 | 0.0 | 0.0 | 0.0 |
| SEP 2022 | 0.0 | 0.0 | 0.0 | 0.0 | 0.0 | 4.1 | 0.9 | 0.0 | 0.4 | 2.3 | 0.1 | 0.1 | 0.1 | 0.0 | 0.3 | 22.8 | 0.9 | 0.9 | 0.1 | 0.0 | 0.0 |
| AUG 2022 | 0.0 | 0.0 | 0.0 | 0.1 | 0.0 | 1.6 | 0.7 | 0.0 | 0.8 | 1.1 | 0.2 | 0.0 | 0.0 | 0.0 | 0.5 | 15.2 | 2.0 | 2.1 | 0.2 | 0.0 | 0.0 |

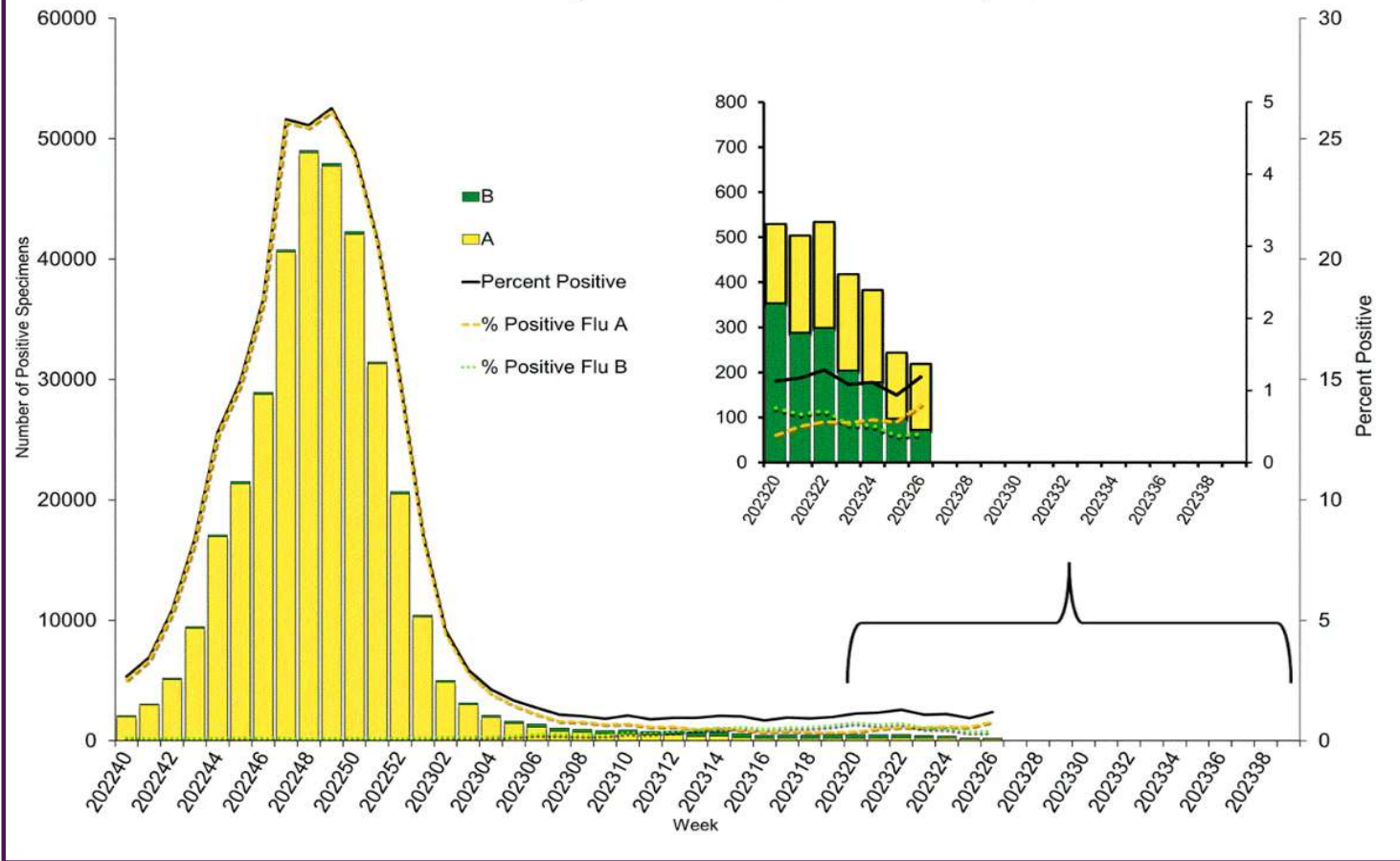
Data generated using: RPPNL (LAB9955)

ACL INFLUENZA positivity rate (Apr 29, 2023 – Jul 8, 2023)



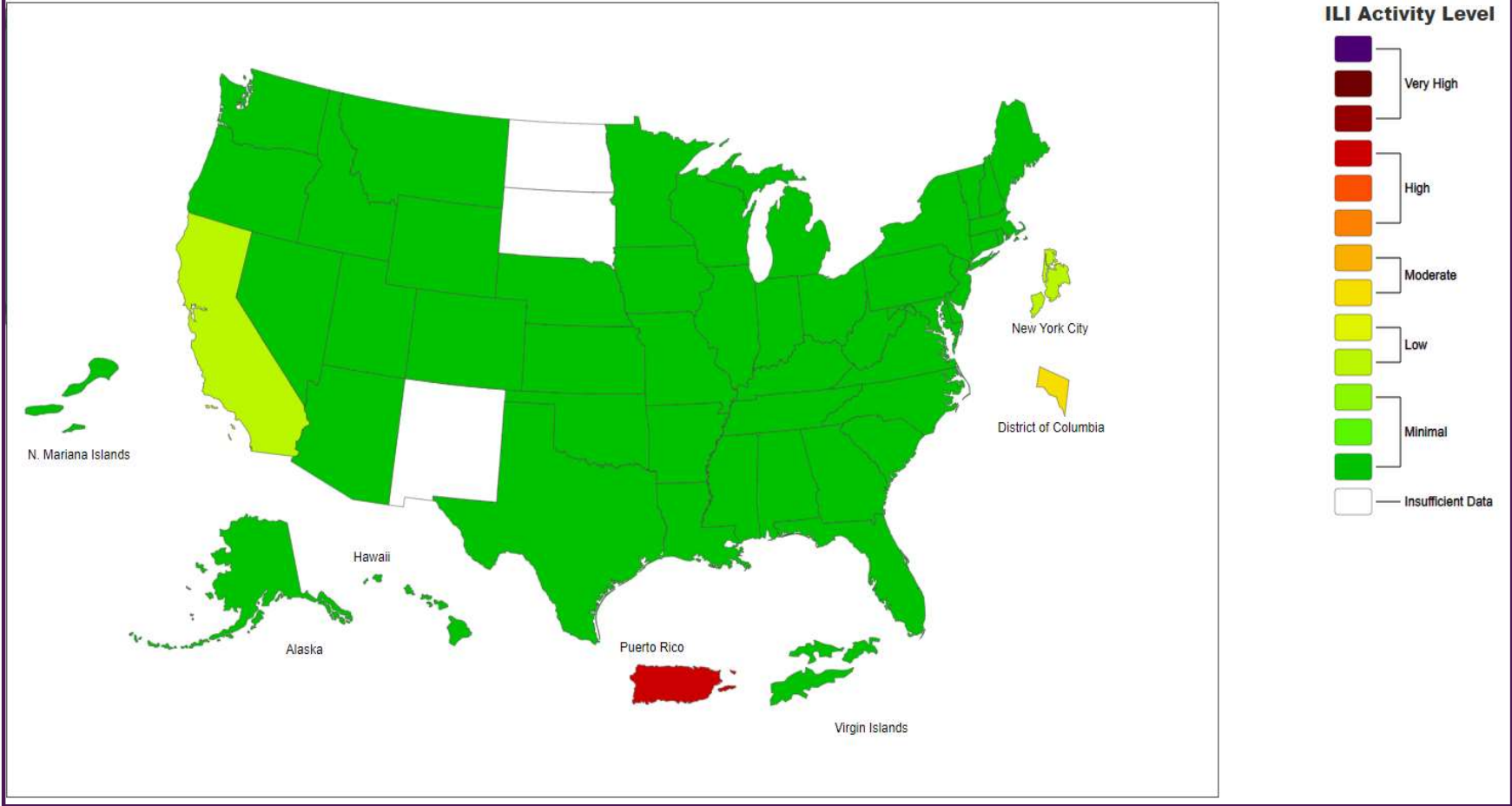
Data generated using: Respiratory Pathogen Panel (LAB9955), Influenza PCR, COVID/FLU/RSV Panel (LAB10789), COVID/Flu by PCR (LAB10889), and SARS-CoV-2/Influenza by PCR (LAB11071)

Influenza Positive Tests Reported to CDC by U.S. Clinical Laboratories, National Summary, October 2, 2022 – July 1, 2023



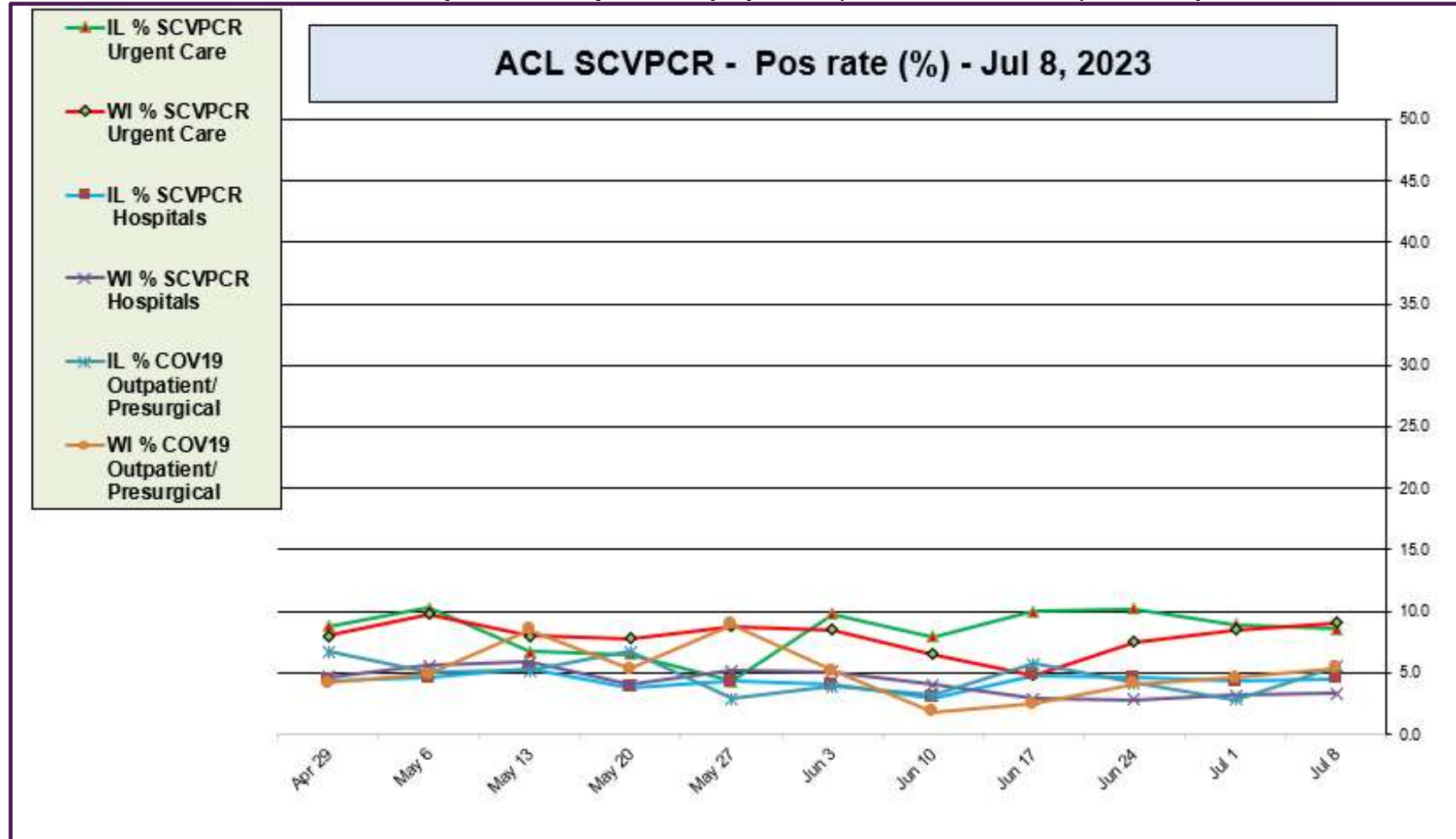
<https://www.cdc.gov/>

2022-23 Influenza Season Week 26 ending Jul 01, 2023



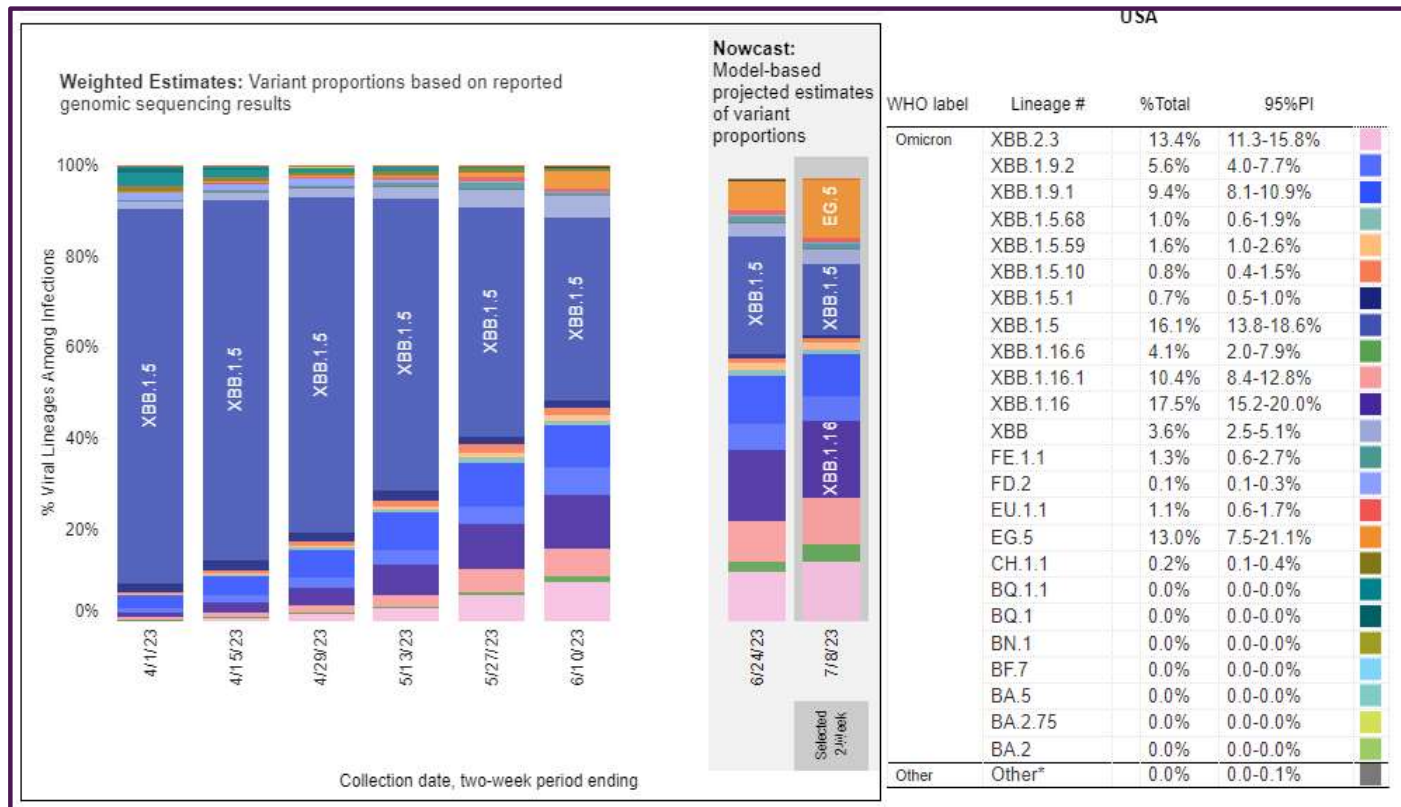
<https://www.cdc.gov/>

ACL SARS-CoV-2 positivity rate (Apr 29, 2023 – Jul 8, 2023)



Data generated using: RAPID SARS-COV-2 BY PCR (LAB10644), COVID/FLU/RSV Panel (LAB10789), prior to 9/17 COVID-19 ANTIGEN TEST (SOFIA) (LAB10715), post 9/17 LAB10644 performed at WI and IL urgent cares sites

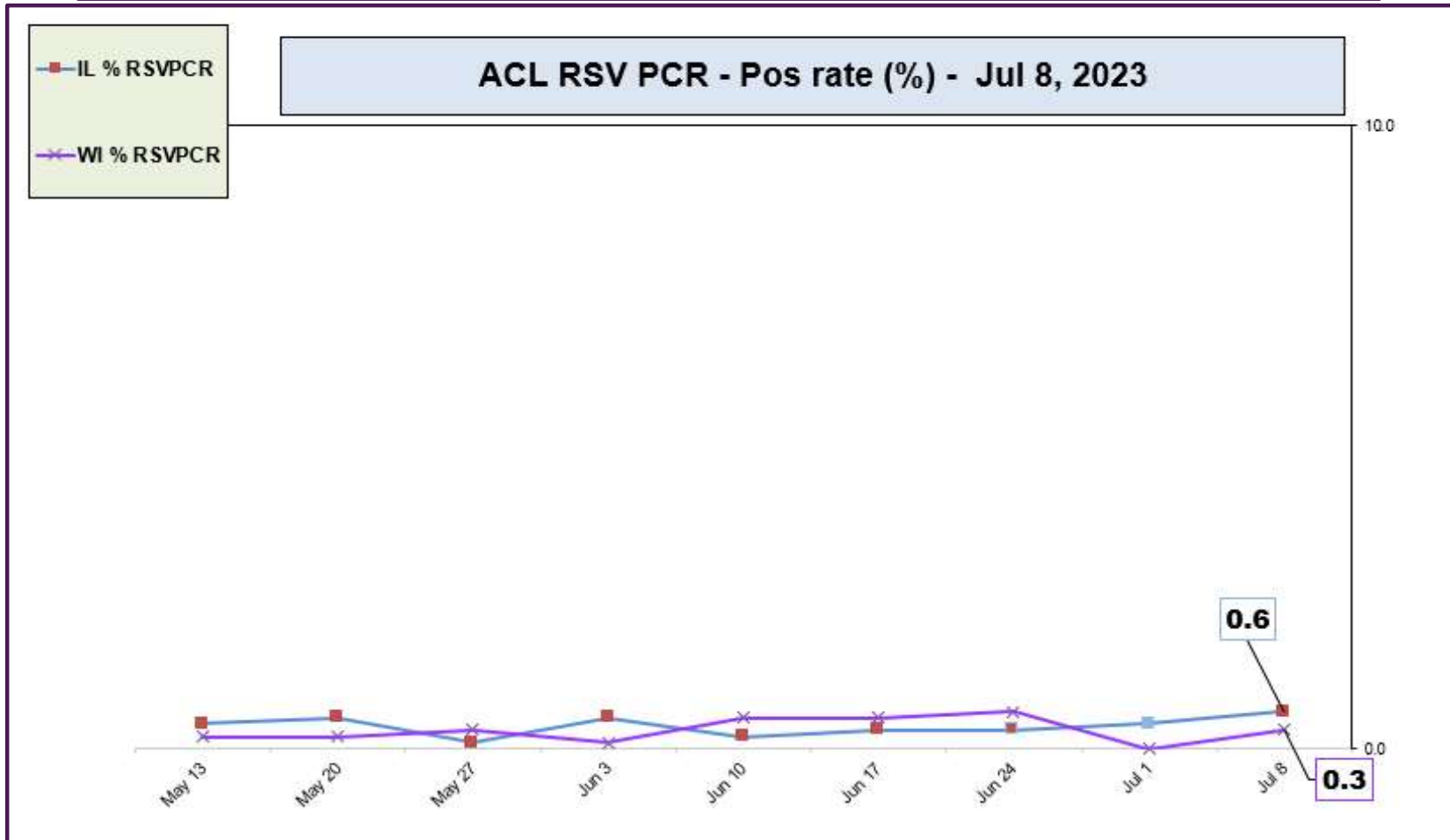
July 8, 2023 – SARS-CoV-2 circulating in the Midwest based on projection by Nowcast modeling
(Omicron XBB.1.5 – 16.1% ↓, XBB1.16 – 17.5% ↓, XBB.1.9.1 – 9.4% ↓, XBB.1.9.2 – 5.6% ↓, XBB.2.3 13.4% ↑)



** CDC uses **Nowcast** model that estimates more recent proportions of circulating variants (actual sequencing data is typically delayed for 2 weeks).

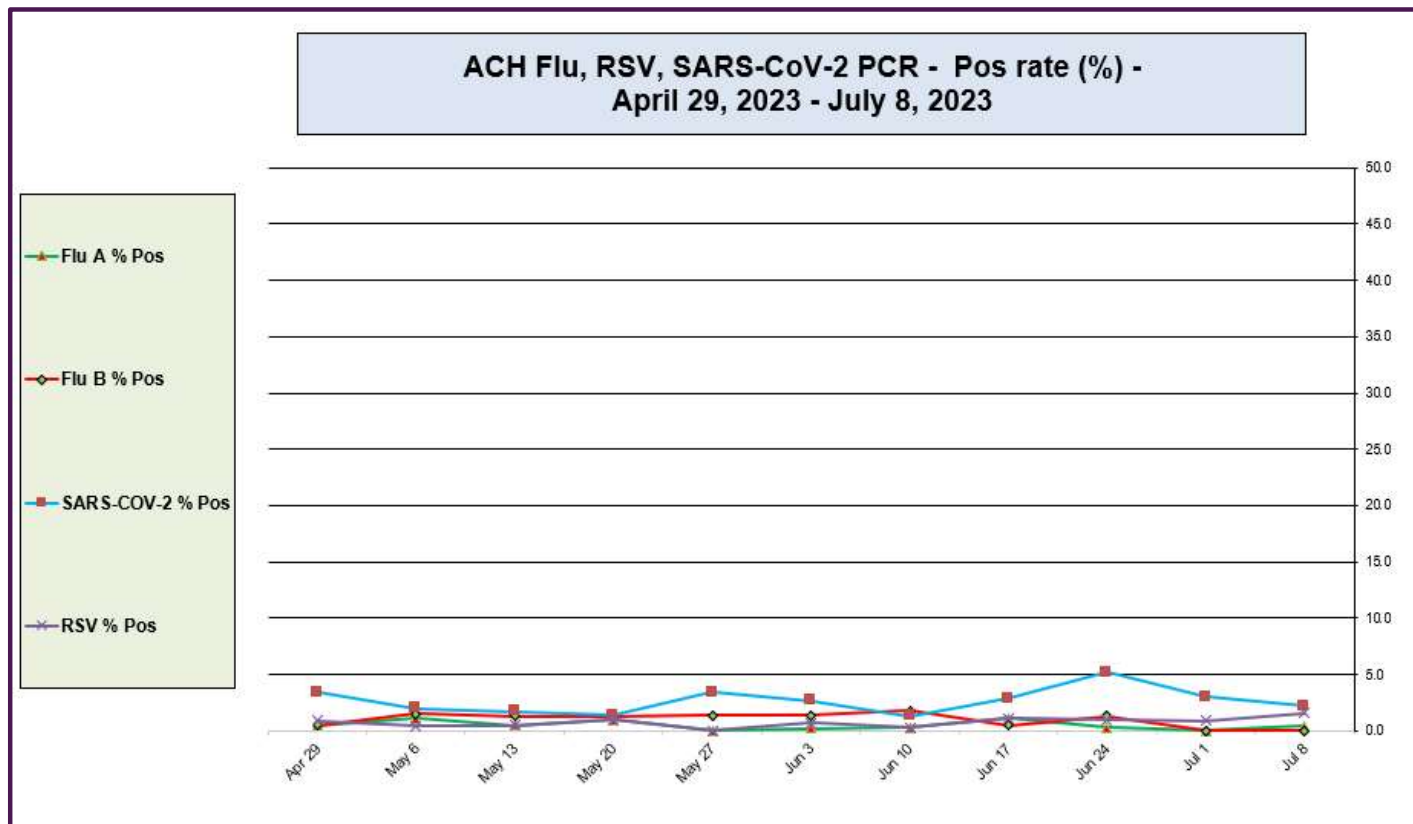
<https://www.cdc.gov/>

ACL RSV PCR positivity rate (May 13, 2023 – Jul 8, 2023)



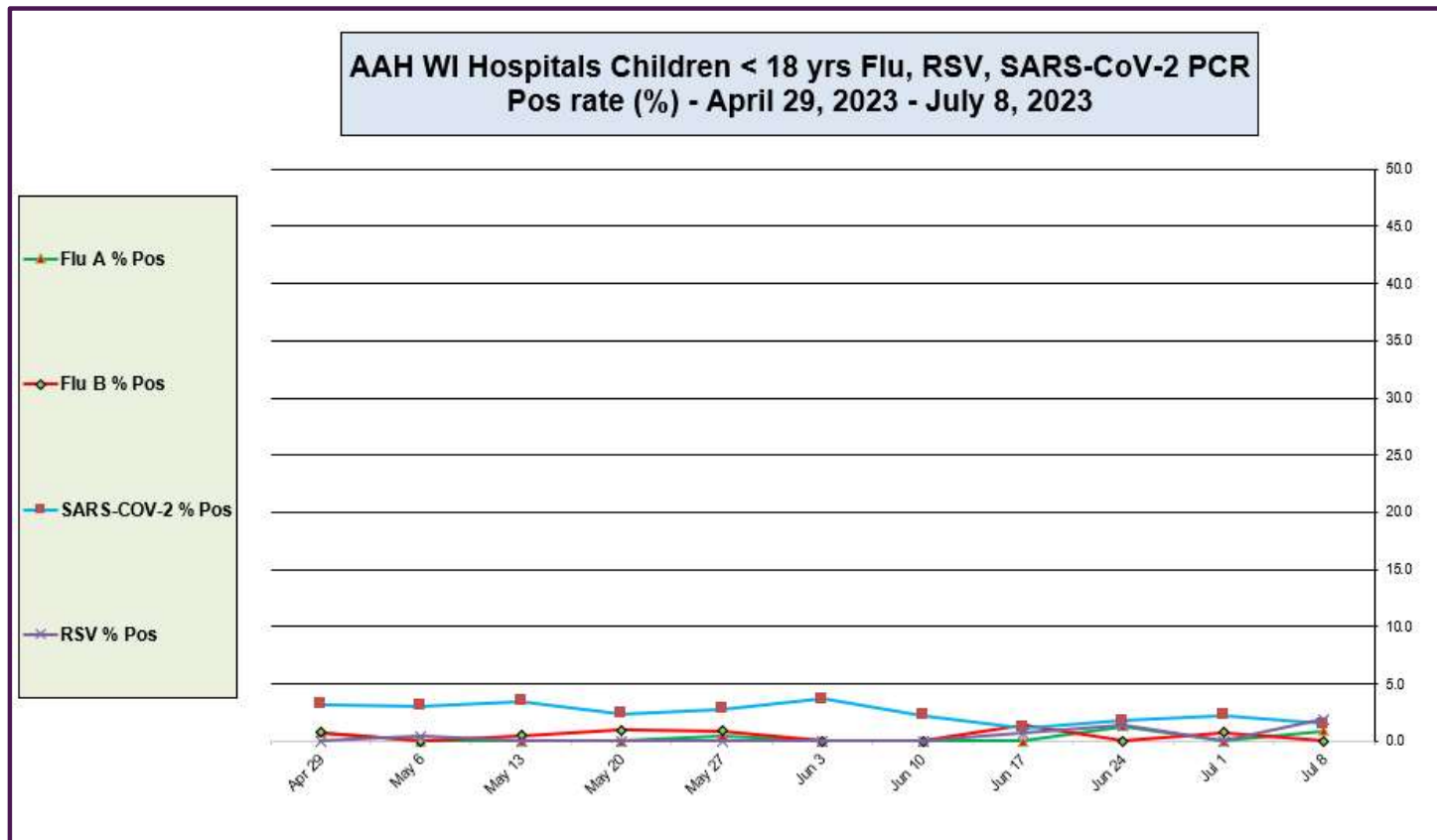
Data generated using: Respiratory Pathogen Panel (LAB9955) and COVID/FLU/RSV Panel (LAB10789)

Advocate Children's Hospital Influenza A, Influenza B, RSV, and SARS-CoV-2 PCR Positivity rates (April 29, 2023 – July 8, 2023)



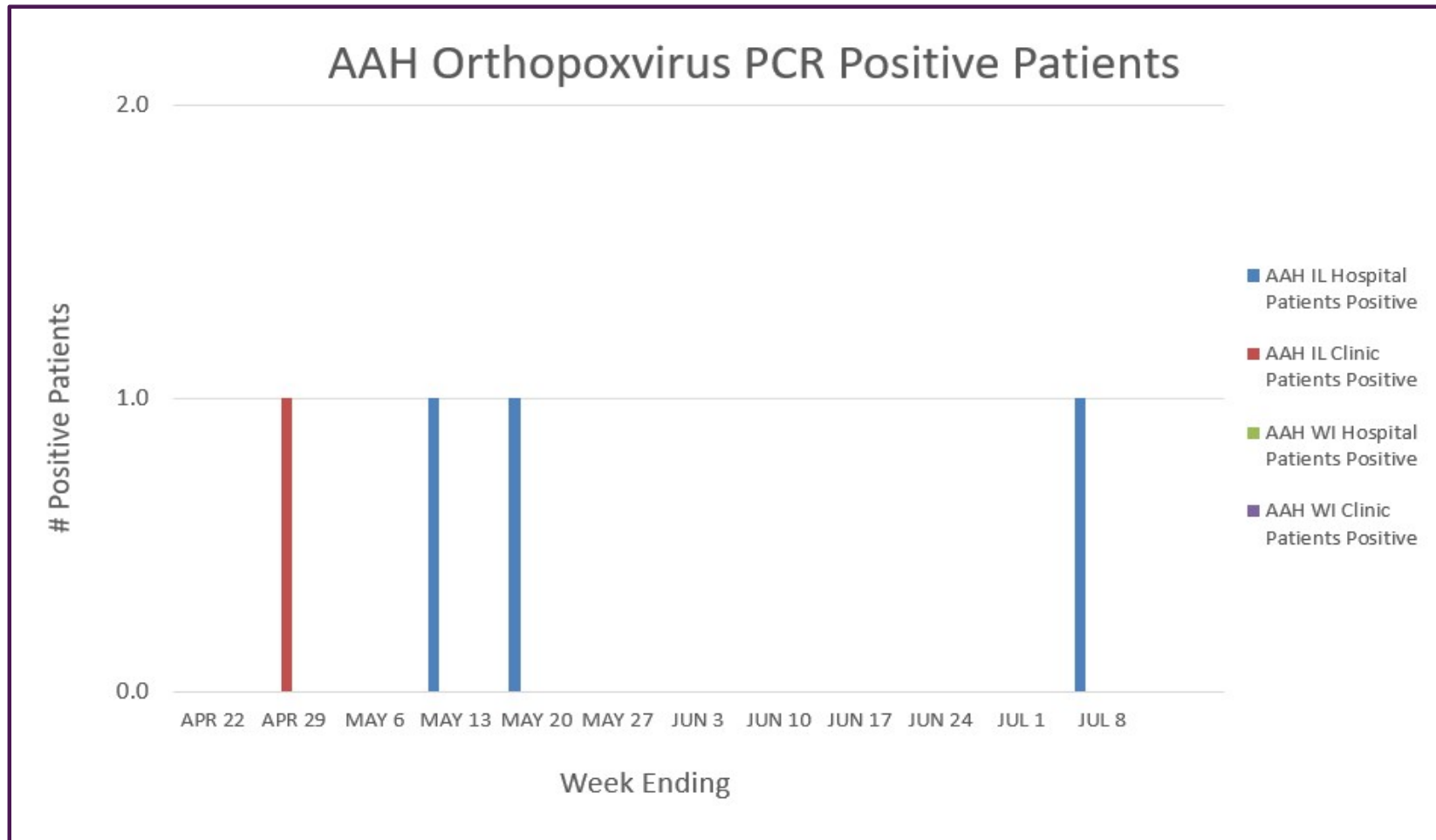
Data generated using: Respiratory Pathogen Panel (LAB9955), Rapid SARS-CoV-2 by PCR (LAB10644), COVID/FLU by PCR (LAB10889), COVID/FLU/RSV Panel (LAB10789), 2019 Novel Coronavirus (SARS-CoV-2) LAB10635

AAH WI Hospitals (patients < 18 yrs old) Influenza A, Influenza B, RSV, and SARS-CoV-2 PCR Positivity rates (April 29, 2023 – July 8, 2023)



Data generated using: Respiratory Pathogen Panel (LAB9955), Rapid SARS-CoV-2 by PCR (LAB10644), COVID/FLU by PCR (LAB10889), COVID/FLU/RSV Panel (LAB10789), 2019 Novel Coronavirus (SARS-CoV-2) LAB10635

AAH Orthopoxvirus Positive Patients (April 22, 2023 – July 8, 2023)



Data generated using: Miscellaneous Test (LAB10119 to Sent to IL/WI State Labs) 5/29/22-7/24/22 and Orthopoxvirus by PCR (LAB11274 sent to ARUP 7/25/22 – Present)