

# ACL Laboratories Respiratory Virus Activity Report

Updated: August 9, 2023

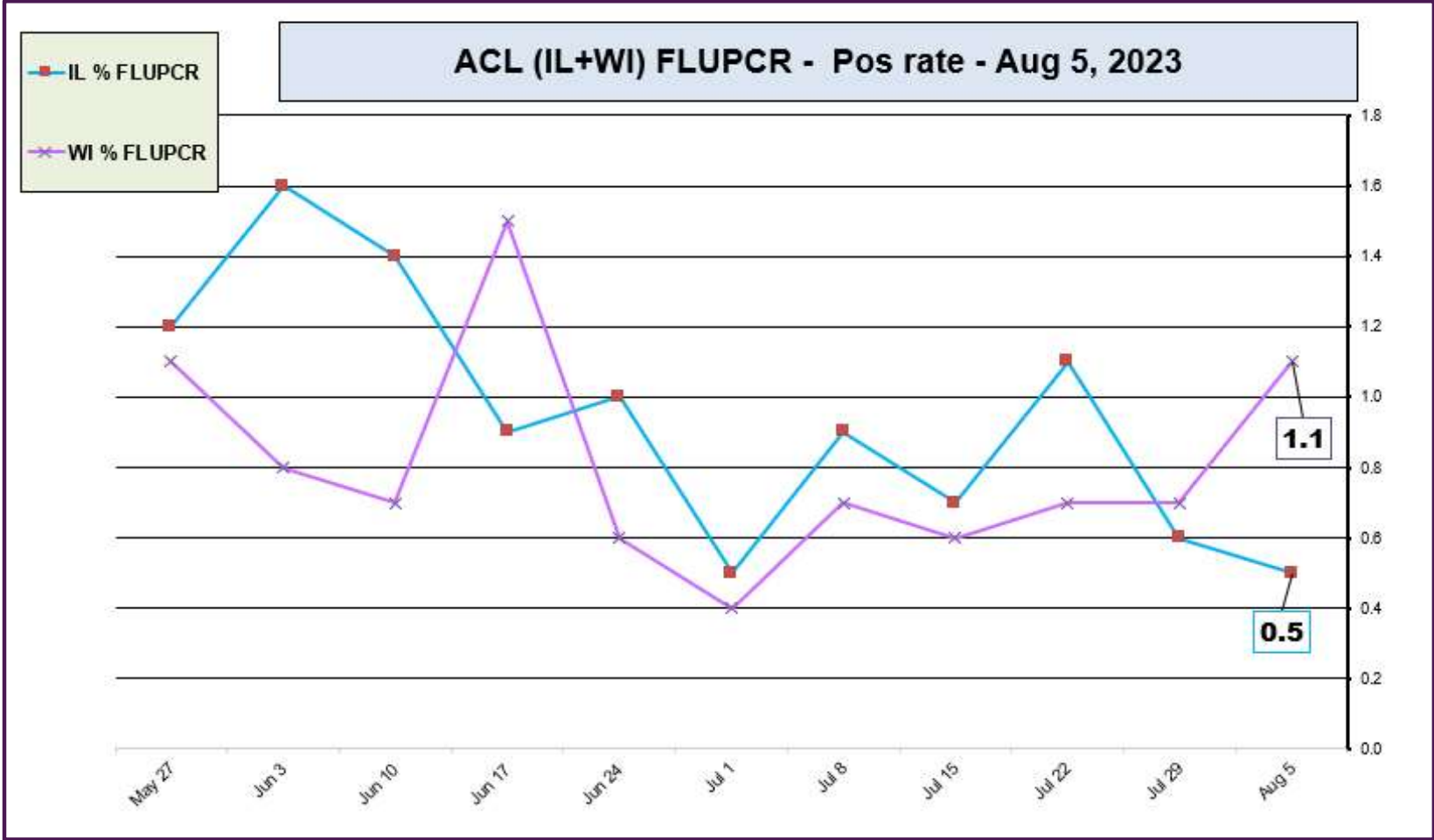


## RESPIRATORY PATHOGEN PANEL SEPTEMBER 2023 - AUGUST 9, 2023 Positivity Rate (%)

MONTH	FLU A UnSub	FLU A (H1N1)	2009 H1N1	FLU A H3N2	FLU B	RSV A/B	PARA 1	PARA 2	PARA 3	PARA 4	COR 229E	COR NL63	COR OC43	COR HKU1	META	ENTERO/RHINO	Adeno	BOCA	Legio-nella	Chla-mydia	Mycoplasm
AUG 2023	0.0	0.0	1.1	0.0	0.4	0.0	0.0	1.4	2.2	0.4	0.0	0.0	0.0	0.0	4.7	17.3	2.5	0.4	0.0	0.0	0.0
JUL 2023	0.0	0.0	0.0	0.1	0.1	0.4	1.2	1.7	1.5	0.9	0.0	0.3	0.0	0.0	3.1	11.1	2.4	0.2	0.4	0.0	0.0
JUN 2023	0.0	0.0	0.1	0.0	0.1	0.3	0.8	1.6	5.2	0.0	0.1	0.1	0.1	0.0	0.5	11.3	3.5	0.3	0.2	0.0	0.0
MAY 2023	0.0	0.1	0.2	0.0	0.1	0.2	0.5	1.1	6.8	0.1	0.1	0.9	0.1	0.1	3.2	17.1	3.2	0.5	0.0	0.0	0.0
APR 2023	0.0	0.0	0.2	0.1	0.1	0.1	0.4	0.5	5.4	0.1	0.3	0.9	0.2	0.5	11.1	12.1	3.1	1.0	0.1	0.0	0.0
MAR 2023	0.1	0.0	0.1	0.0	0.1	0.2	0.4	0.1	2.7	0.0	0.3	1.9	0.8	0.8	13.3	13.1	3.2	1.4	0.0	0.0	0.0
FEB 2023	0.0	0.0	0.2	0.1	0.0	0.5	0.0	0.4	1.2	0.2	0.0	3.7	1.5	1.6	9.3	13.2	3.7	1.6	0.0	0.0	0.0
JAN 2023	0.2	0.0	0.5	0.5	0.1	1.2	0.7	0.1	0.8	0.3	0.2	1.2	2.0	1.4	5.9	12.1	3.3	2.9	0.0	0.0	0.0
DEC 2022	0.3	0.1	1.0	7.0	0.1	3.6	1.1	0.2	0.5	1.5	0.3	0.6	1.7	1.3	2.1	11.7	2.9	4.0	0.1	0.1	0.1
NOV 2022	0.3	0.0	0.5	5.6	0.0	8.1	1.6	0.5	0.8	1.4	0.1	0.1	0.5	0.0	0.8	13.0	2.6	3.3	0.0	0.0	0.0
OCT 2022	0.1	0.0	0.2	0.8	0.0	10.0	2.1	0.4	0.5	3.5	0.0	0.1	0.1	0.1	0.7	18.2	2.4	2.6	0.0	0.0	0.0
SEP 2022	0.0	0.0	0.0	0.0	0.0	4.1	0.9	0.0	0.4	2.3	0.1	0.1	0.1	0.0	0.3	22.8	0.9	0.9	0.1	0.0	0.0

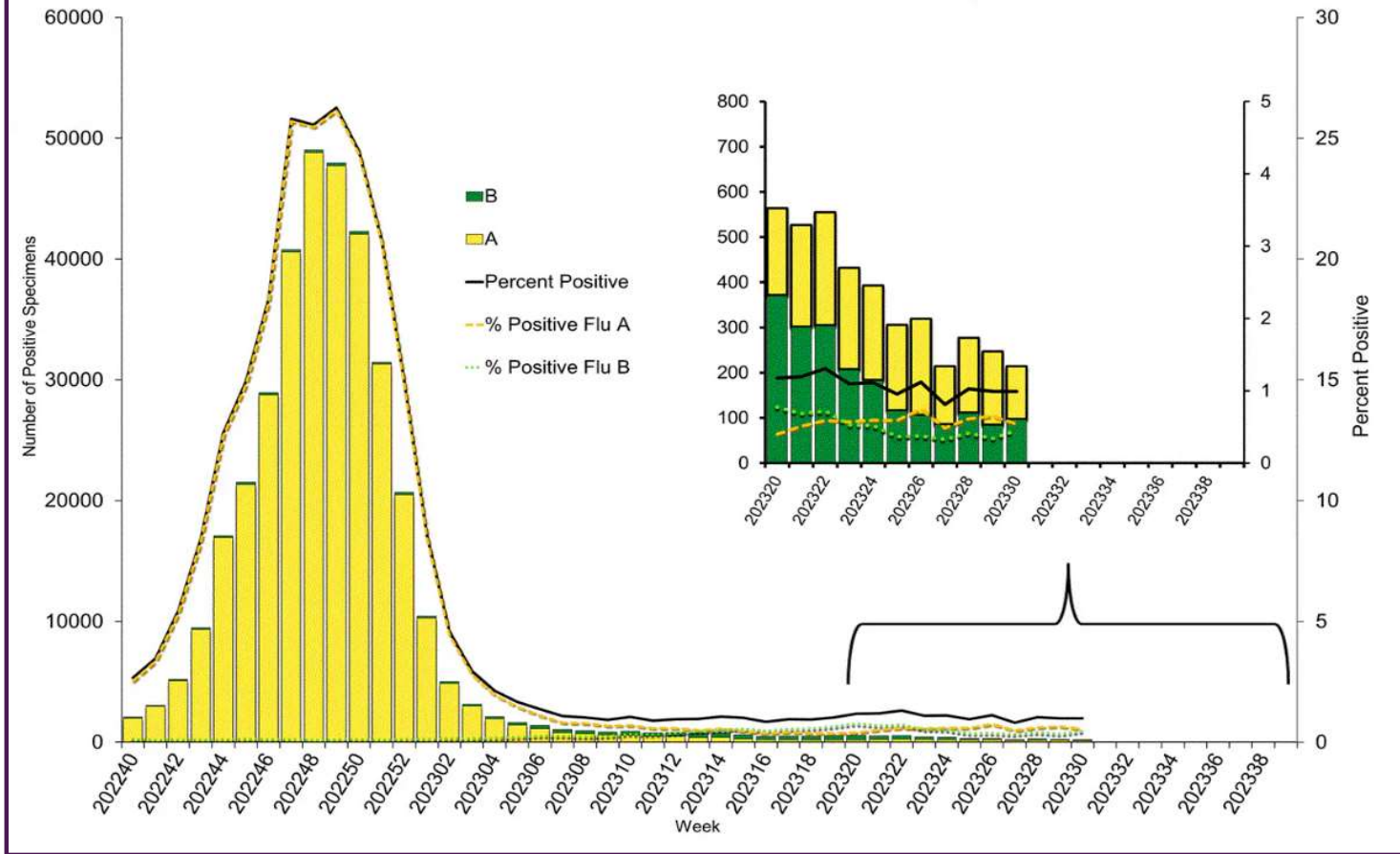
Data generated using: RPPNL (LAB9955)

# ACL INFLUENZA positivity rate (May 27, 2023 – Aug 5, 2023)



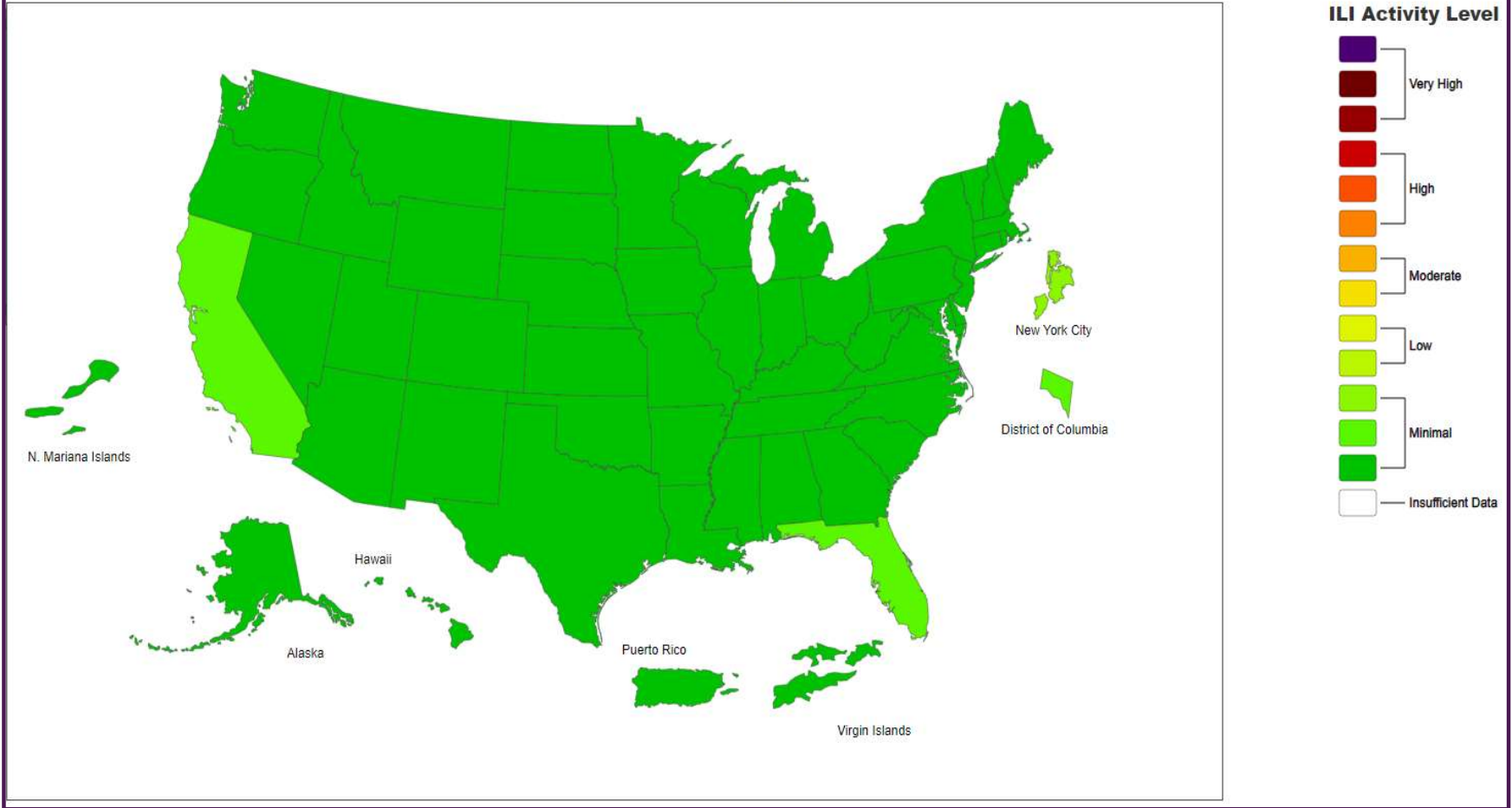
Data generated using: Respiratory Pathogen Panel (LAB9955), Influenza PCR, COVID/FLU/RSV Panel (LAB10789), COVID/Flu by PCR (LAB10889), and SARS-CoV-2/Influenza by PCR (LAB11071)

# Influenza Positive Tests Reported to CDC by U.S. Clinical Laboratories, National Summary, October 2, 2022 – July 29, 2023



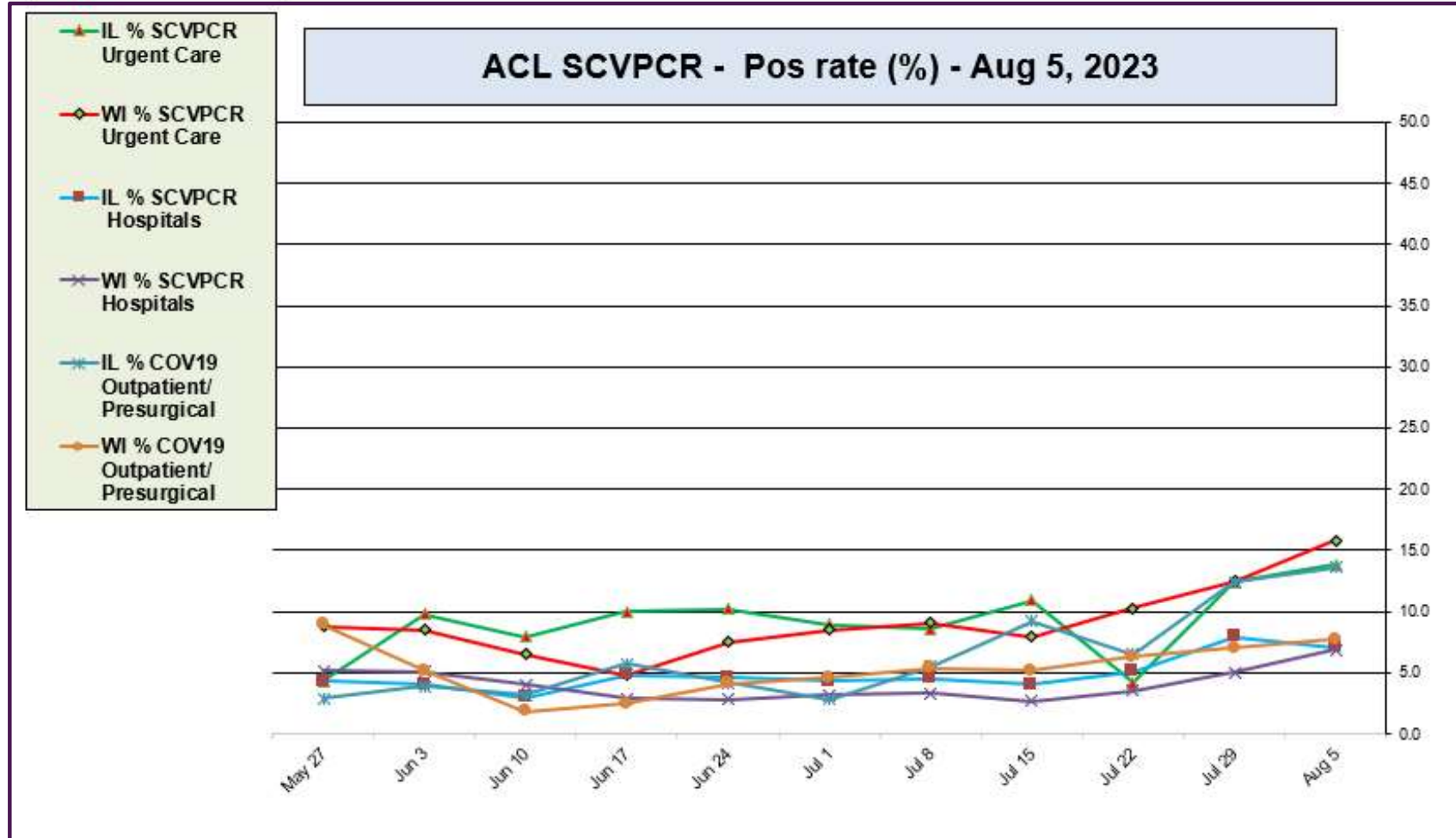
<https://www.cdc.gov/>

2022-23 Influenza Season Week 30 ending Jul 29, 2023



<https://www.cdc.gov/>

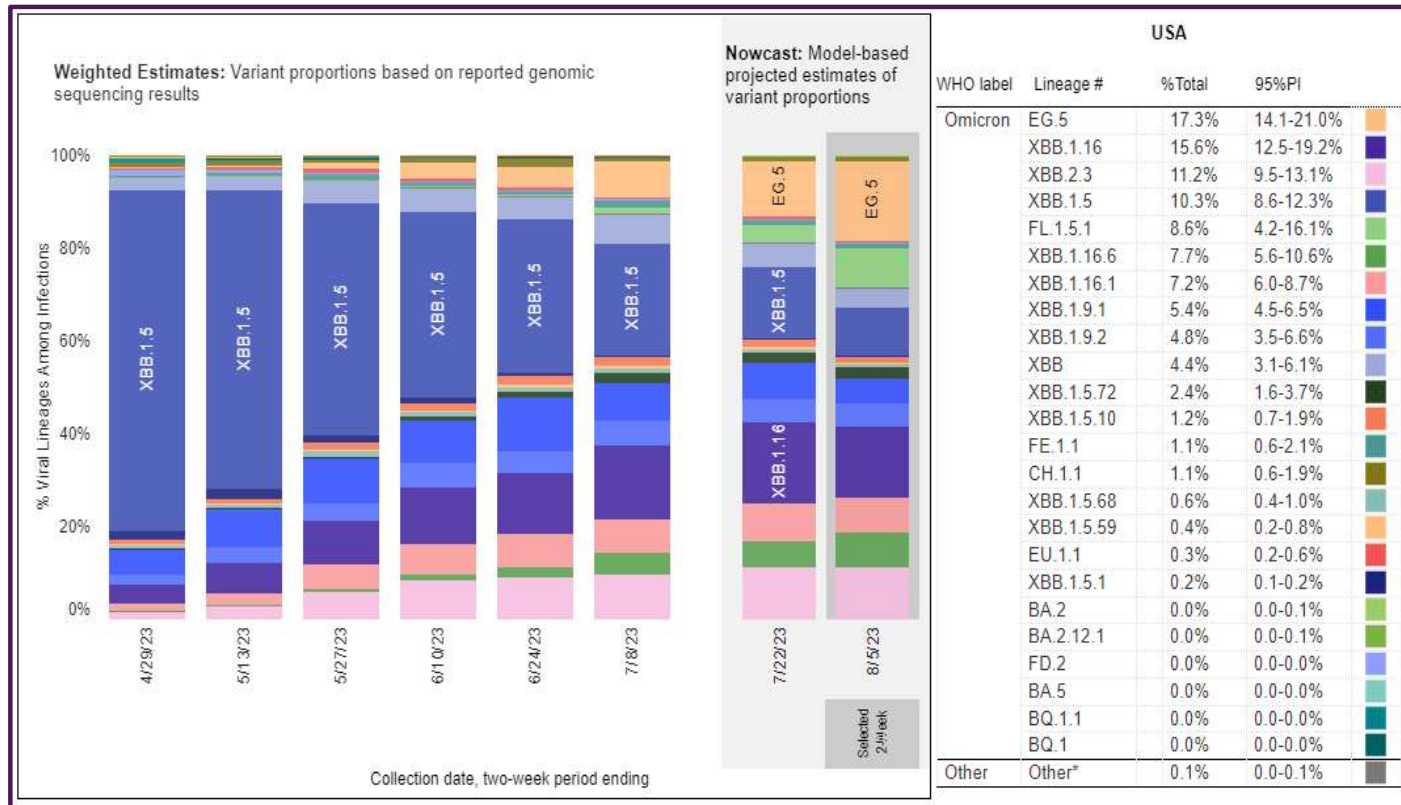
## ACL SARS-CoV-2 positivity rate (May 27, 2023 – Aug 5, 2023)



Data generated using: RAPID SARS-COV-2 BY PCR (LAB10644), COVID/FLU/RSV Panel (LAB10789), prior to 9/17 COVID-19 ANTIGEN TEST (SOFIA) (LAB10715), post 9/17 LAB10644 performed at WI and IL urgent cares sites

# August 5, 2023 – TOP 5 SARS-CoV-2 Strains circulating in the Midwest by Nowcast modeling

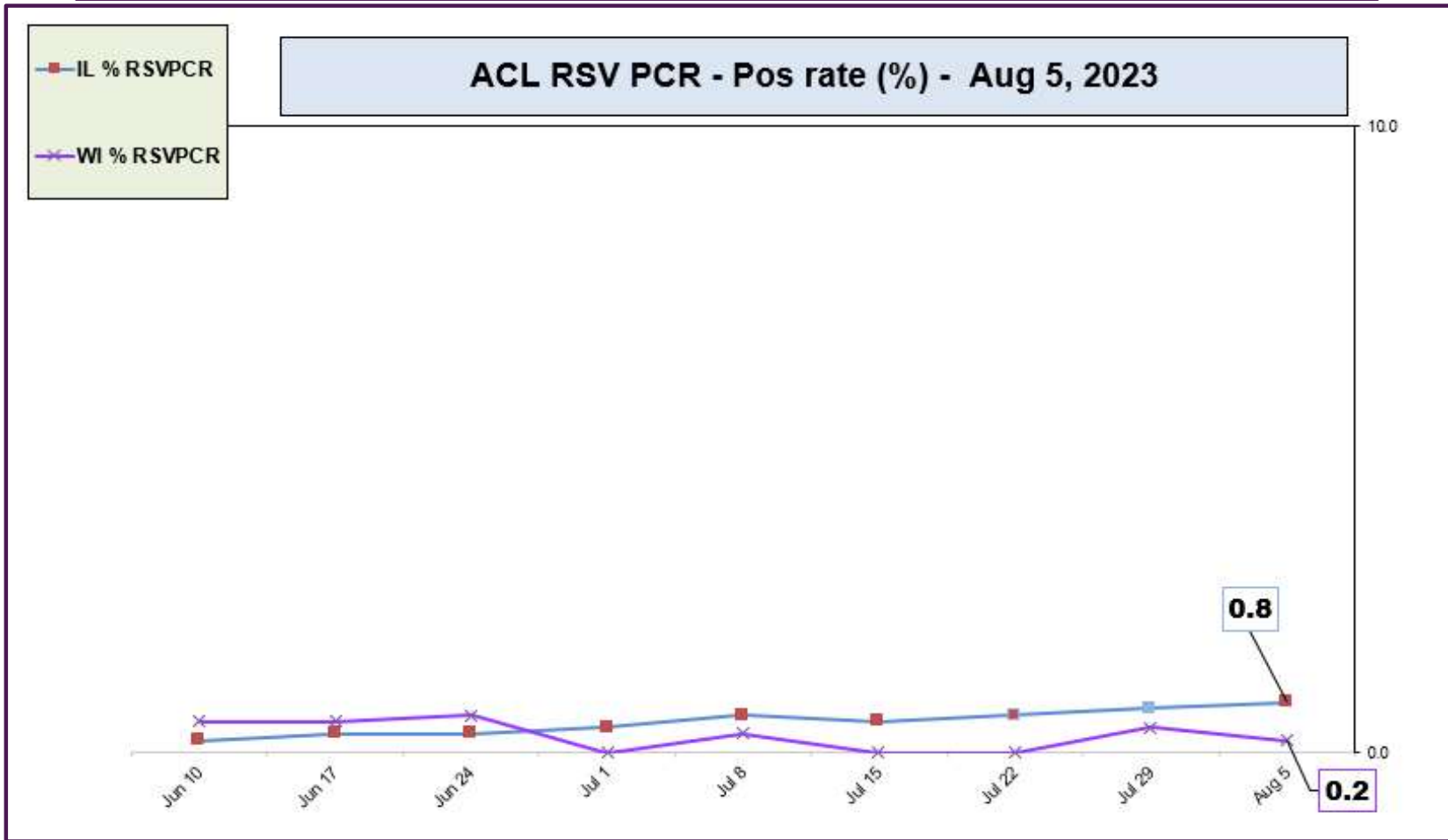
(Omicron EG.5 – 17.3% ↑, XBB.1.16 – 15.6% ↑, XBB.2.3 11.2% ↓, XBB.1.5 – 10.3% ↓, FL.1.5.1 8.6% ↑)



\*\* CDC uses **Nowcast** model that estimates more recent proportions of circulating variants (actual sequencing data is typically delayed for 2 weeks).

<https://www.cdc.gov/>

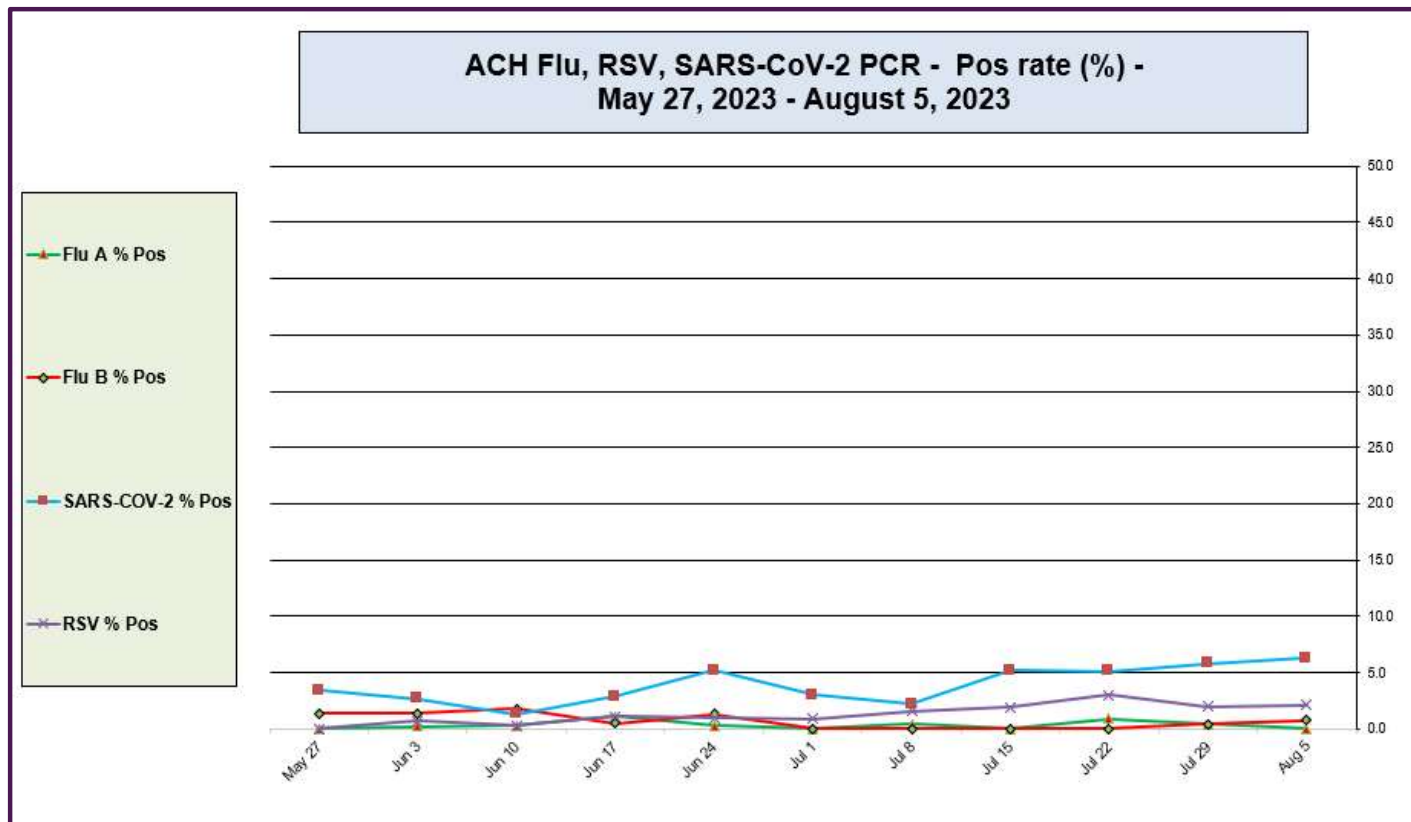
## ACL RSV PCR positivity rate (Jun 10, 2023 – Aug 5, 2023)



Data generated using: Respiratory Pathogen Panel (LAB9955) and COVID/FLU/RSV Panel (LAB10789)

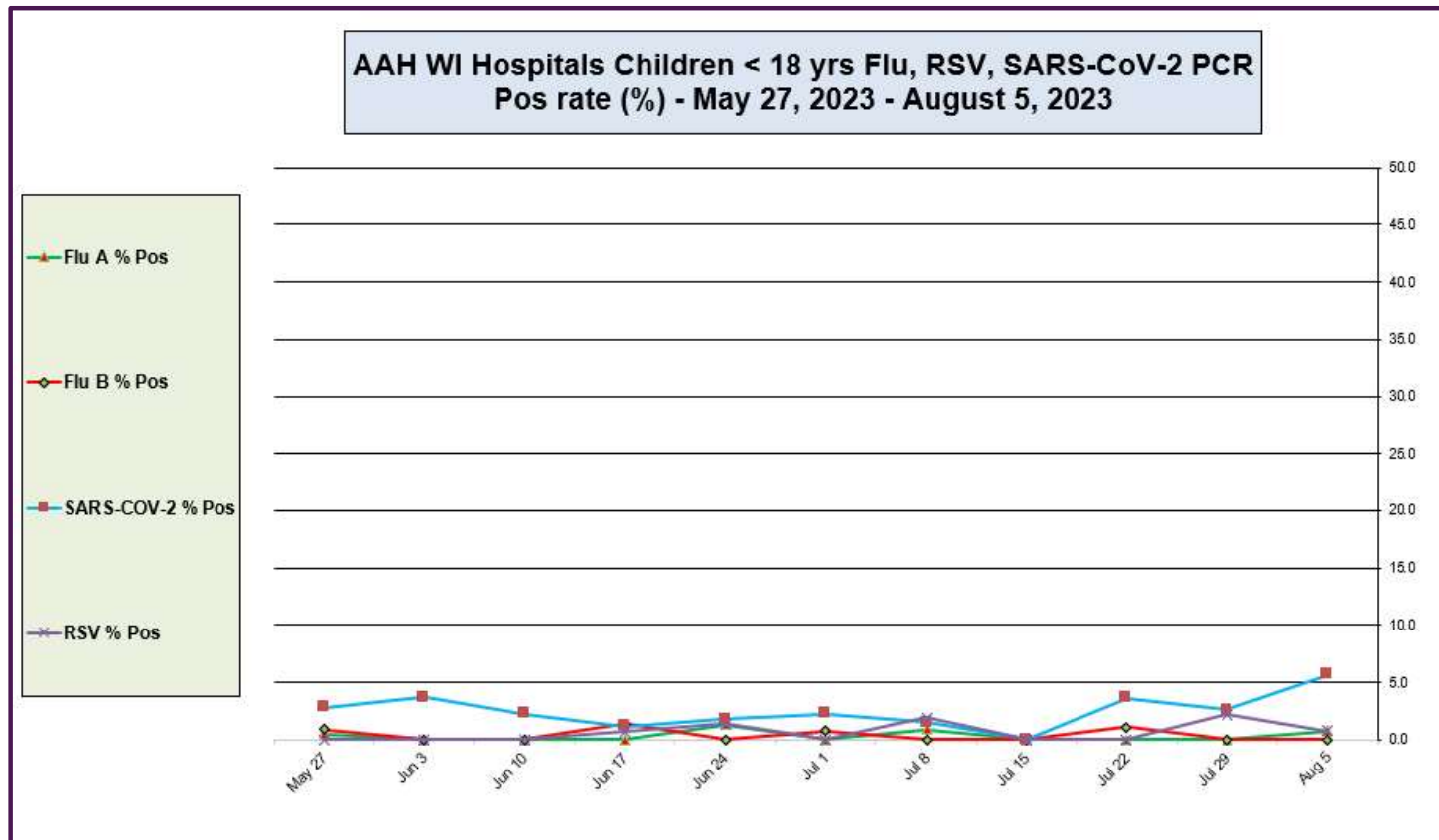


## Advocate Children's Hospital Influenza A, Influenza B, RSV, and SARS-CoV-2 PCR Positivity rates (May 27, 2023 – August 5, 2023)



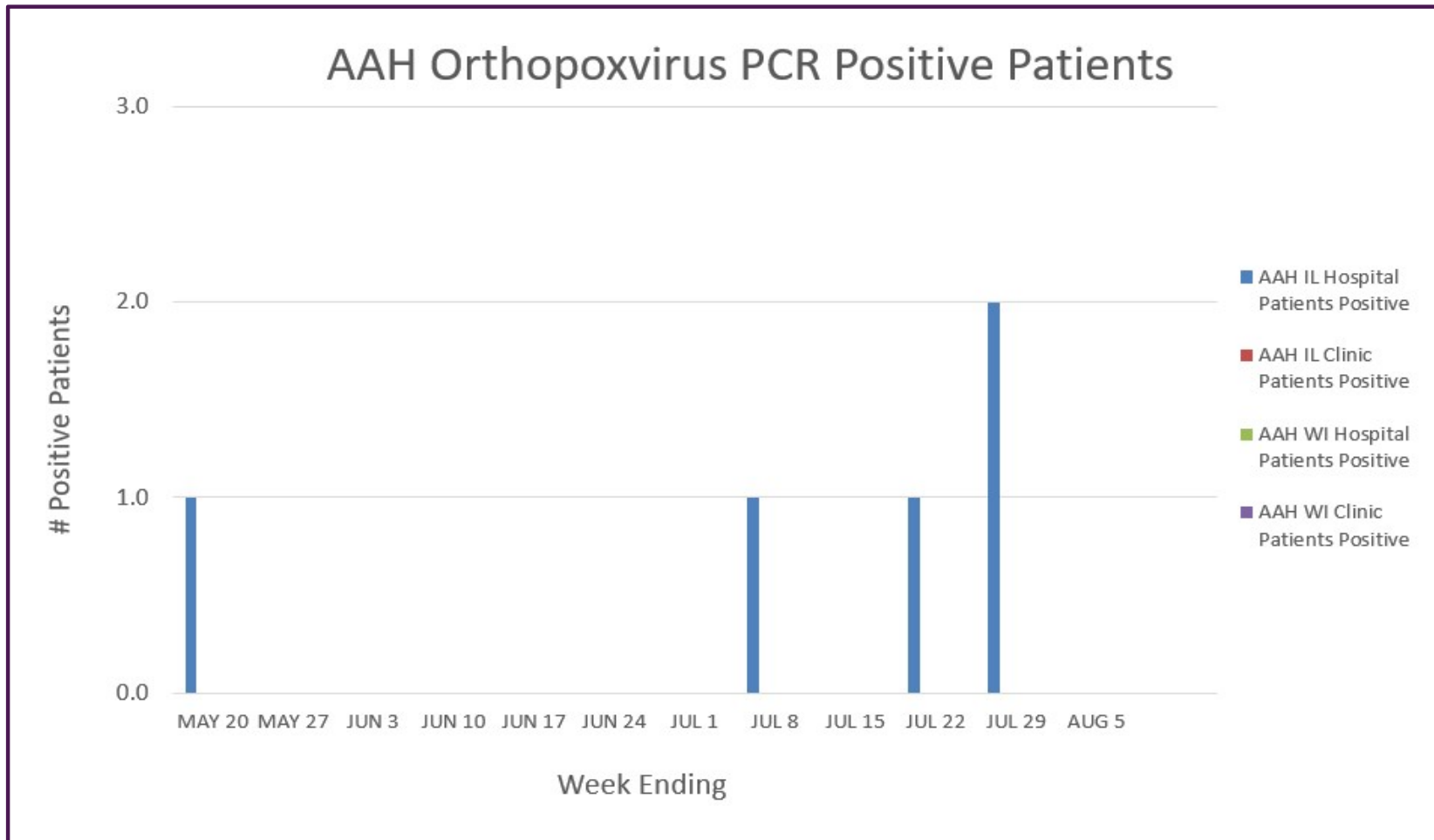
**Data generated using:** Respiratory Pathogen Panel (LAB9955), Rapid SARS-CoV-2 by PCR (LAB10644), COVID/FLU by PCR (LAB10889), COVID/FLU/RSV Panel (LAB10789), 2019 Novel Coronavirus (SARS-CoV-2) LAB10635

# AAH WI Hospitals (patients < 18 yrs old) Influenza A, Influenza B, RSV, and SARS-CoV-2 PCR Positivity rates (May 27, 2023 – August 5, 2023)



Data generated using: Respiratory Pathogen Panel (LAB9955), Rapid SARS-CoV-2 by PCR (LAB10644), COVID/FLU by PCR (LAB10889), COVID/FLU/RSV Panel (LAB10789), 2019 Novel Coronavirus (SARS-CoV-2) LAB10635

## AAH Orthopoxvirus Positive Patients (May 20, 2023 – August 5, 2023)



Data generated using: Miscellaneous Test (LAB10119 to Sent to IL/WI State Labs) 5/29/22-7/24/22 and Orthopoxvirus by PCR (LAB11274 sent to ARUP 7/25/22 – Present)